



**PPIC**

PUBLIC POLICY  
INSTITUTE OF CALIFORNIA

# College Enrollment under California's New Financial Aid Application Policy

## Technical Appendix

### CONTENTS

Appendix A. Research Methods

Appendix B. Tables and Figures

Rachel Yang Zhou, Kevin Cook, and Selina Gomez

Supported with funding from the Evelyn and Walter Haas, Jr. Fund and the Gates Foundation

# Appendix A. Research Methods

## Quantitative Methods

This study uses quantitative research methods to explore how college enrollment patterns and financial aid access/uptake changed following the implementation of the universal financial aid application policy in California. The analysis was guided by the following research questions:

1. How did college enrollment and enrollees' financial aid access/uptake change?
2. How did changes in college enrollment and aid access/uptake vary across student groups?
3. How did college choice and aid access/uptake shift across institutional sectors?

Our research utilizes student-level data matched between the California Student Aid Commission (CSAC) and the National Student Clearinghouse (NSC). CSAC provides data from the Institutional Student Information Record (ISIR), which includes data from students' financial aid applications, such as FAFSA completion date, expected family contribution (EFC), and demographics (e.g. parental education). CSAC also provides Cal Grant applicants and payment records. NSC provides postsecondary enrollment data reported by institutions nationwide. Since a GPA is one of the requirements needed to be considered for a Cal Grant award, most California high schools automatically submit all seniors' GPA to CSAC. Our analytic sample includes all high school seniors whose GPAs were submitted to CSAC – students without a GPA submission do not appear in the CSAC records and are therefore excluded from our dataset. According to CSAC, missing data may result from school- or student-level omissions, and these omissions are generally considered random. Students in our sample were subsequently matched to their college enrollment records in the NSC. We focus on three high school graduating cohorts: the class of 2018 (pre-COVID baseline), the class of 2022 (pre-policy comparison group), and the class of 2023 (the first post-policy treatment cohort). We've also linked in school-level aggregate data from the California Department of Education (CDE) to capture students' socioeconomic backgrounds.

Our research primarily examines descriptive changes in FAFSA completion, college enrollment, and aid eligibility and access from the high school graduation cohort of 2021-22 (one cohort prior to policy implementation) to the high school graduation cohort of 2022-23 (the first cohort subject to the policy). Where appropriate, we also compare with the 2017-18 cohort as a pre-COVID baseline. We focus on the 2022-23 cohort because it reflects the first year of the universal financial aid application policy and precedes other federal-level changes – such as the FAFSA Simplification Act and recent technical delays – that could otherwise introduce additional noise into the analysis. To analyze the policy's impact on the college-going rate, we used a causal design based on a dosage difference-in-difference model, leveraging school-level pre-policy FAFSA completion rates as a measure of treatment intensity.

### Dosage Difference-In-Difference Model

The universal financial aid application policy is designed to increase FAFSA completion rates, particularly among students at high schools where FAFSA completion was low before the policy took effect. This variation in pre-policy FAFSA completion rates serves as the basis for measuring treatment intensity across schools. The underlying idea is that if completing FAFSA increases the likelihood of enrolling in college, schools that saw the largest increases in FAFSA completions – typically those starting with lower rates – should also experience the greatest gains in college enrollment. The difference in enrollment trends over time between schools with initially low and high FAFSA completion rates capture the overall impact of the policy. We estimate this effect, denoted by  $\beta$ , using the following dosage difference-in-difference model:

$$CollEnr_{st} = \alpha + \theta_s + \gamma_t + \beta(1 - BaseFAFSA)_s * Post_t + \mu'X_{st} + \epsilon_{st}$$

The analysis is conducted at the school (s) – year (t) level and includes all high schools in our dataset with more than 10 students enrolled in 12<sup>th</sup> grade, covering the 2021-22 and 2022-23 school years. The outcome variable  $CollEnr_{st}$  is the college enrollment rate for each school in a year. The key explanatory variable is the interaction between the treatment intensity, defined as 1 minus the baseline FAFSA completion rate in 2021-22, and the post-policy year (coded as 1 for 2022-23 and 0 for 2021-22). We included school fixed effects to account for time-invariant characteristics for each school and year fixed effects to control for statewide trends or shocks. The vector  $X_{st}$  includes additional school-level controls: the percentage of students who are White, Black, Latino, or Asian, the share eligible for Free or Reduced-Price Meals (FRPM), A–G completion rate, 12th grade enrollment, and its square. We estimated the model with different sets of these controls. Standard errors are clustered at the school level to control for serial correlation among the error terms. The estimation results are shown in the table below:

	<u>%Enrolled in College</u>		
	(1)	(2)	(3)
(1-BaseFAFSA)*Post	0.028***	0.030***	0.030***
	(0.007)	(0.007)	(0.007)
School fixed effects	yes	yes	yes
Year fixed effects	yes	yes	yes
Student racial composition	no	yes	yes
Share of FRPM	no	yes	yes
12th grade enrollment size	no	yes	yes
A-G completion	no	no	yes
<b>N</b>	<b>3660</b>	<b>3598</b>	<b>3588</b>

SOURCE: Authors' regression results using matched CSAC–NSC data. School-level controls—including student racial composition, share of students eligible for Free or Reduced-Price Meals (FRPM), and A–G completion rates—are drawn from the CDE data.

NOTES: Analysis is conducted at the school-year level and includes all high schools in our dataset with more than 10 students enrolled in 12th grade, covering the 2021-22 and 2022-23 school years. Robust standard errors clustered at the school level are in parentheses. \*\*\* p<0.01, \*\* p<0.05, \* p<0.1.

Our preferred specification, which includes a full set of controls, finds that a school with a 0% FAFSA completion rate in the pre-policy year saw a statistically significant 3 percentage point increase in the college-going rate from 2021-22 to 2022-23, relative to a school that had a 100% baseline FAFSA completion rate. Unless there were other unobserved, time-varying school-level factors that happened to be correlated with the introduction of the universal financial aid application policy, pre-treatment FAFSA completion intensity, and college enrollment, the observed effect reflects the impact of the universal financial aid application policy. To estimate the overall impact of the universal financial aid application policy on college enrollment across all schools in the state, we conduct a back-of-the-envelope calculation. The model estimates that for every 1 percentage point increase in treatment intensity, the college-going rate increased by 0.03 percentage points. Given that the overall FAFSA completion rate rose by 10 percentage points after the policy was implemented, this implies a 0.3 percentage point increase in statewide college-going rate. Applied to the full population of high school seniors, this translates to an estimated 1,500 additional students enrolling in college as a result of the policy.

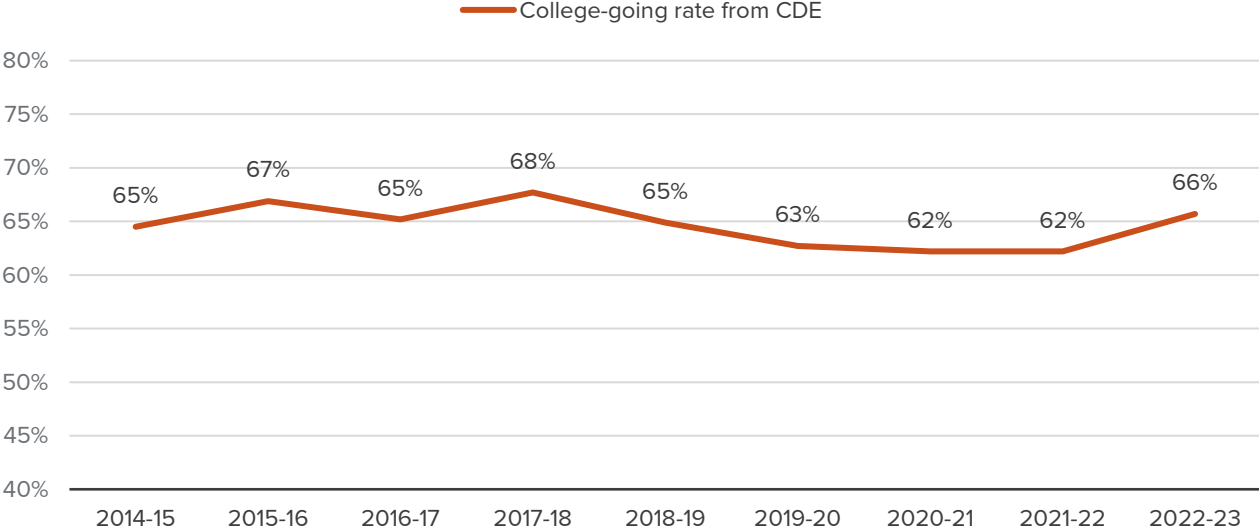
## Caveats and Limitations of this Study

- Causal implication: The trend analysis and observed changes from 2021-22 to 2022-23 are descriptive only and should not be interpreted as causal. While the policy may have contributed to the changes in the post-policy year, other external factors unrelated to the policy could also have influenced the outcomes. The dosage difference-in-difference approach provides a causal estimate under the parallel trend assumption. That is, the result can be interpreted causally if there are no other omitted time-varying and school specific characteristics that are correlated with the introduction of this policy, pre-treatment FAFSA completion rate, and college enrollment.
- CSAC data coverage:
  - High school seniors without GPA submissions to CSAC are excluded from our sample. Based on comparisons with CDE counts, over 90% of high school seniors are captured in the CSAC data. Despite the high coverage, the counts and shares in this report may not exactly match those in our last report or other research, as different analysis samples or methods to identify high school seniors were used.
  - We can only identify financial aid applicants through FAFSA. We do not have access to applications through CADAA, which is used by undocumented and other eligible noncitizen students to apply for state aid. This restriction helps protect sensitive information and prevents misuse of these students' data.
  - Student demographic data are only available for FAFSA applicants since the data come from FAFSA applications. Also, key elements like race and ethnicity are not included in this data. While CSAC has access to race/ethnicity data through a match with CDE, unfortunately, we do not have access to that portion of the data.
  - When studying aid outcomes among college enrollees, we can identify Pell eligibility, but we do not have data on actual receipt or award amounts for Pell or other types of financial aid beyond the Cal Grant.
- NSC data coverage:
  - Postsecondary educational directory information records may be blocked from being shared by the student or institution pursuant to privacy rights outlined in the Family Educational Rights and Privacy Act (FERPA). According to NSC, about 5% of enrollment records nationally are blocked due to students requesting a FERPA privacy block. Additional information can be found on the NSC website at <https://nscresearchcenter.org/workingwithourdata/> under the “FERPA Implications for Researchers” section.
  - NSC does not have enrollment data from non-participating institutions, though this accounts for only a tiny portion of enrollment. Overall, NSC covers approximately 97% of enrolled students across 98% of public and private institutions.
  - NSC matches students using identifiers like names and dates of birth, so data discrepancies or typos can sometimes lead to mismatches.

# Appendix B. Tables and Figures

## APPENDIX FIGURE B1

Before the universal financial aid application policy, college-going rate peaked in 2017-18, then declined after COVID

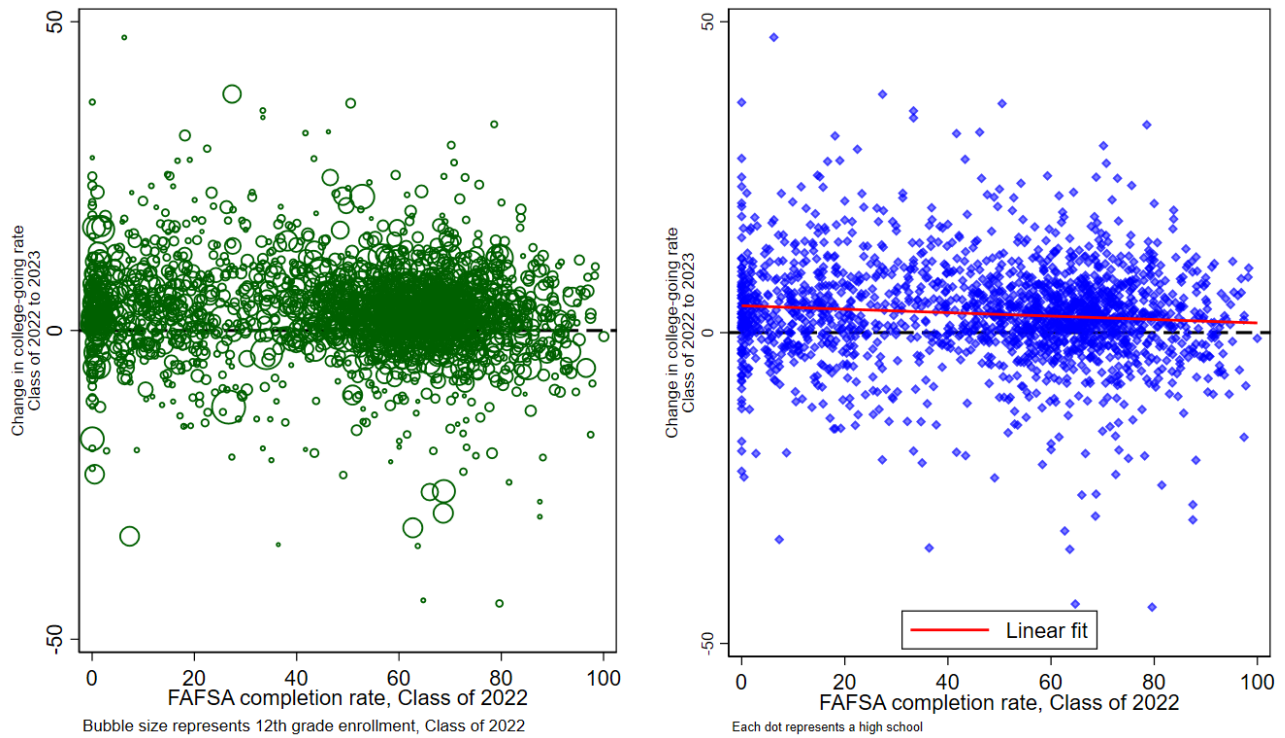


SOURCE: California Department of Education DataQuest.

NOTE: Figure shows college-going rates with a timeframe of 12 months from CDE's DataQuest portal.

## APPENDIX FIGURE B2

Schools with lower baseline FAFSA completion rates had more positive changes in college-going rates following the universal financial aid application policy

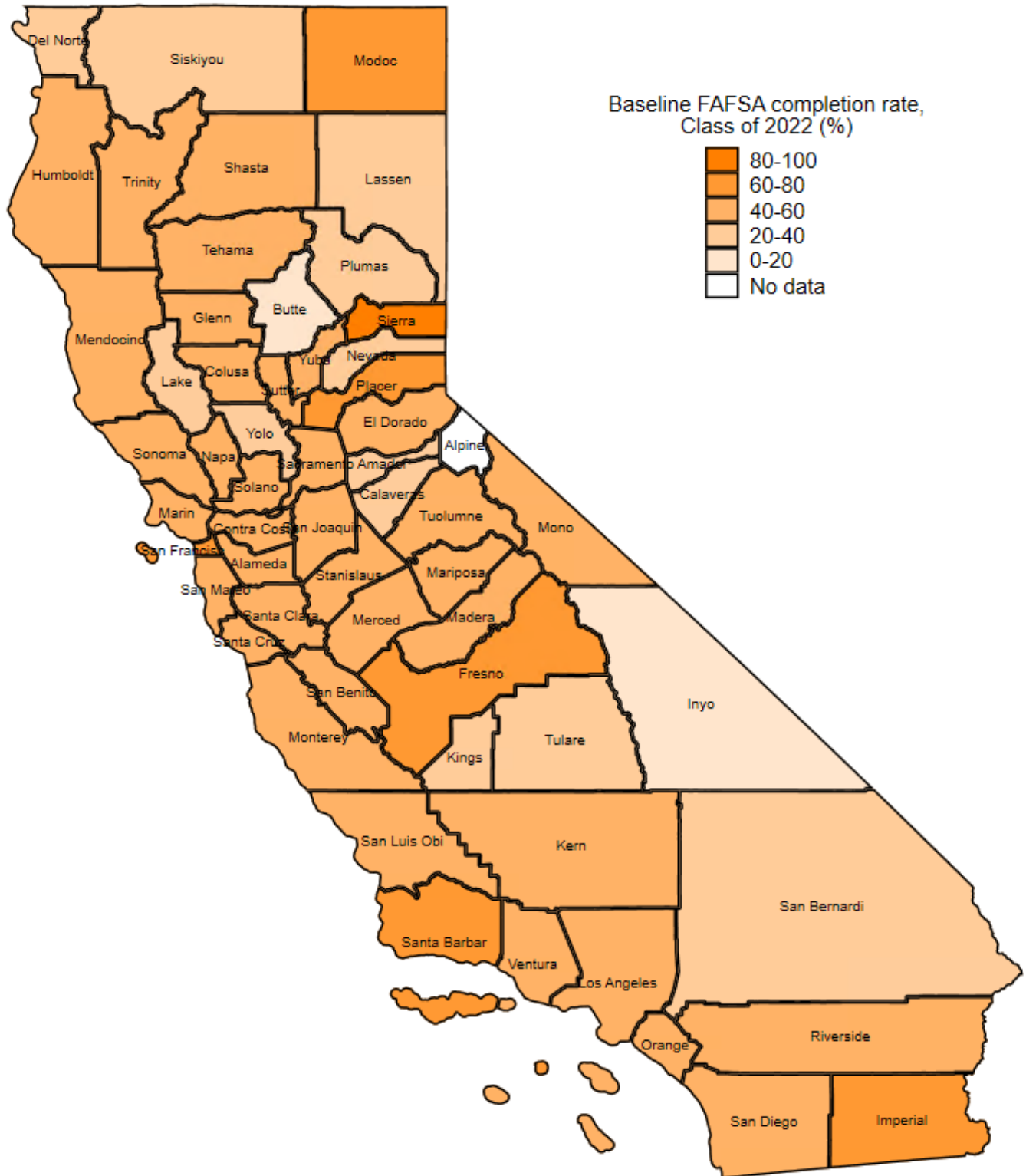


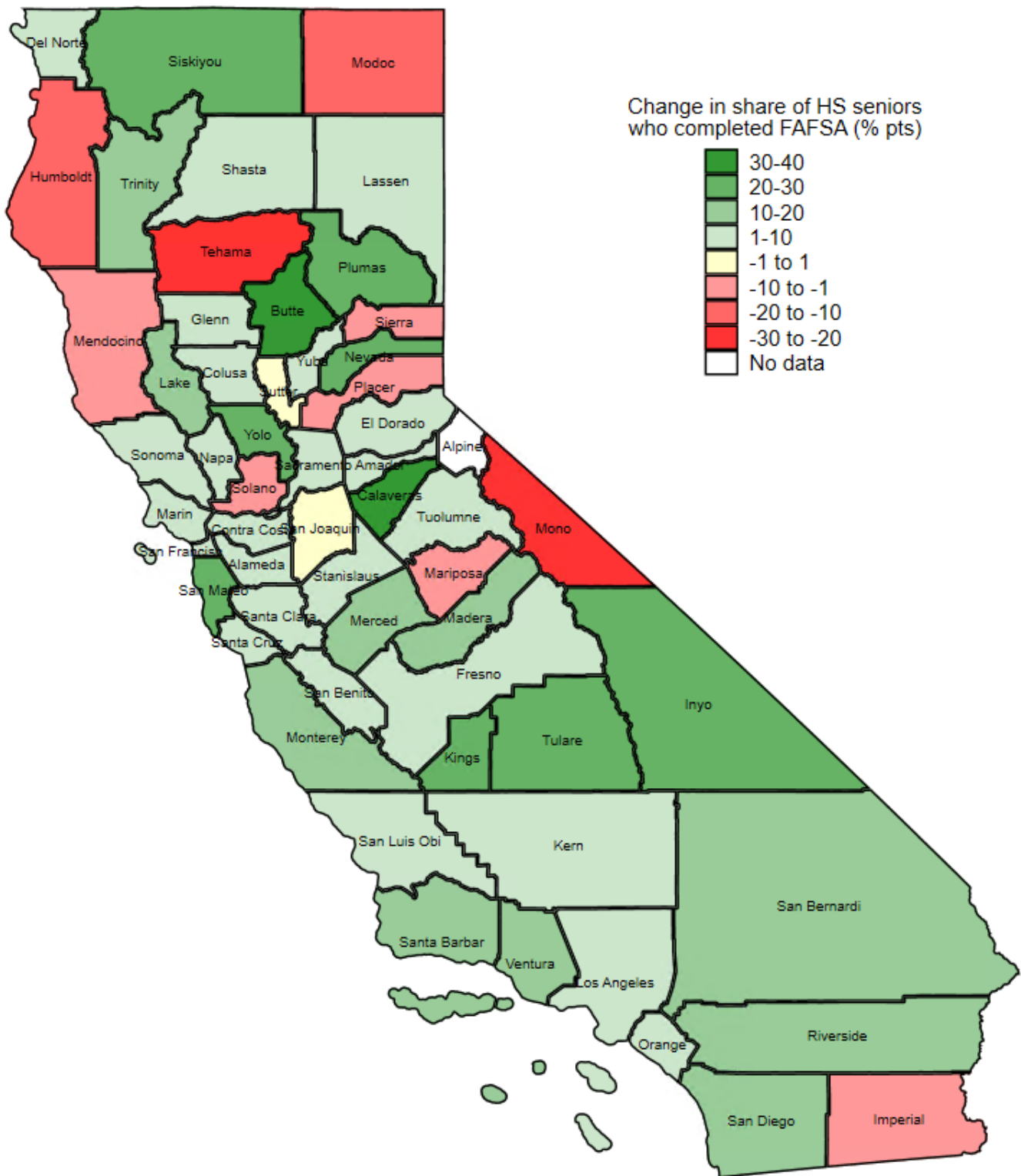
SOURCE: Authors' calculations using matched CSAC -NSC data.

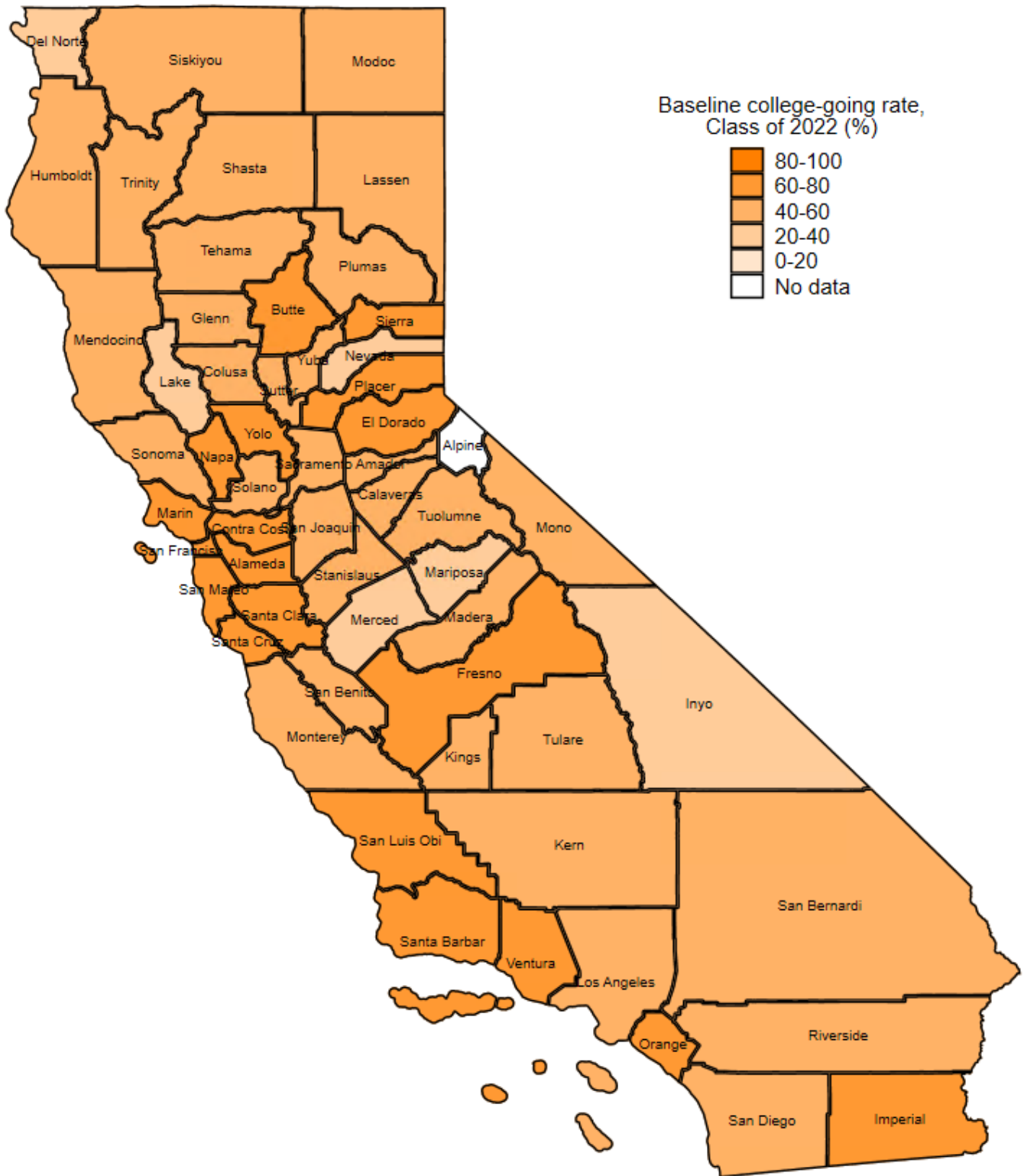
NOTE: Sample is restricted to high school seniors with a non-missing high school code in the 2021-22 and 2022-23 graduating cohorts in the matched CSAC-NSC data. Data are reshaped to the high school level, and only high schools with more than 10 seniors in both cohorts are included in the figure. Students with college enrollment between July 1 of the high school graduation year and June 30 of the following year are counted as enrolled. FAFSA completion is measured by June 30 of the student's high school graduation year.

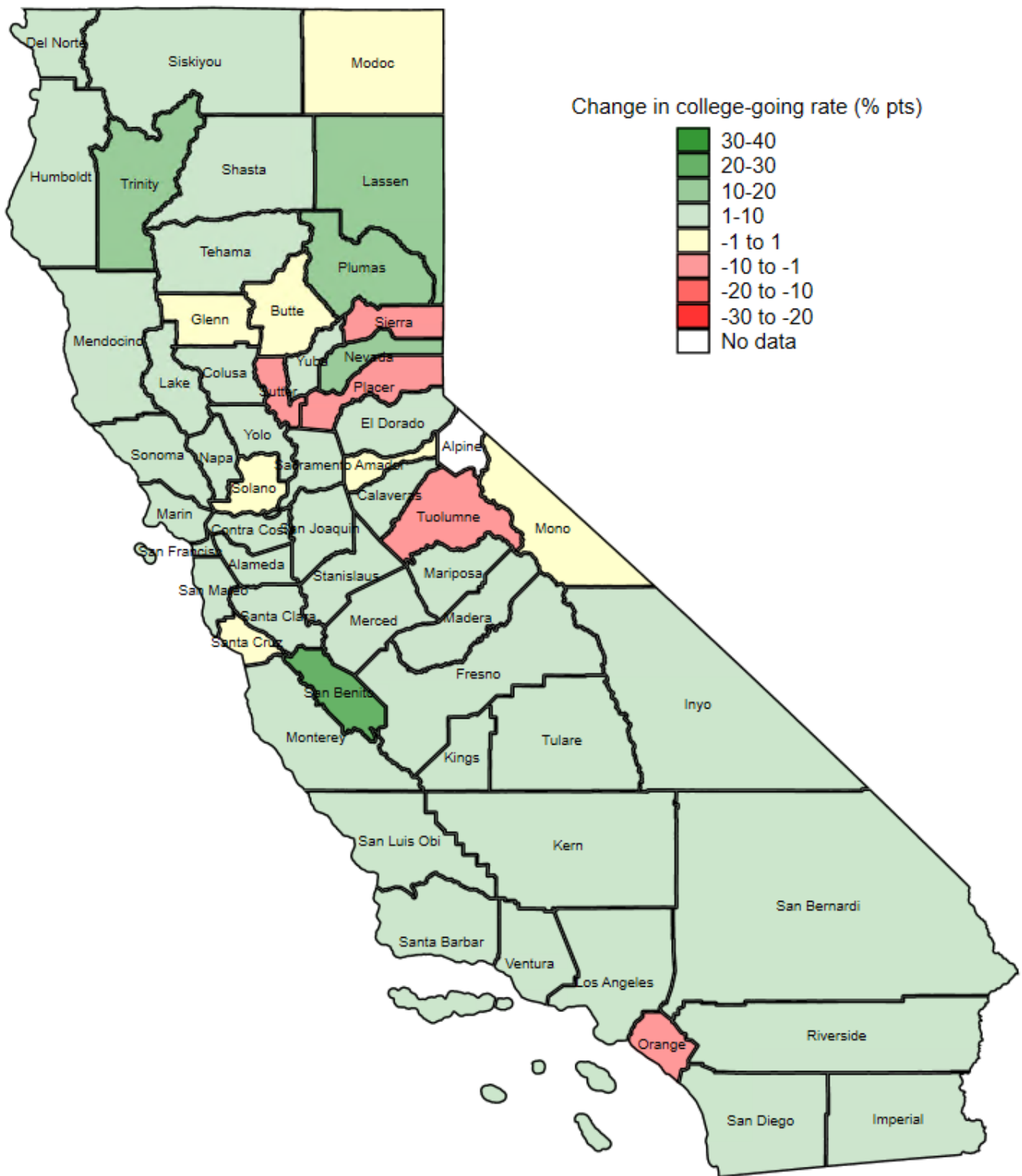
**APPENDIX FIGURE B3**

Most counties showed improvements in FAFSA completion and college enrollment









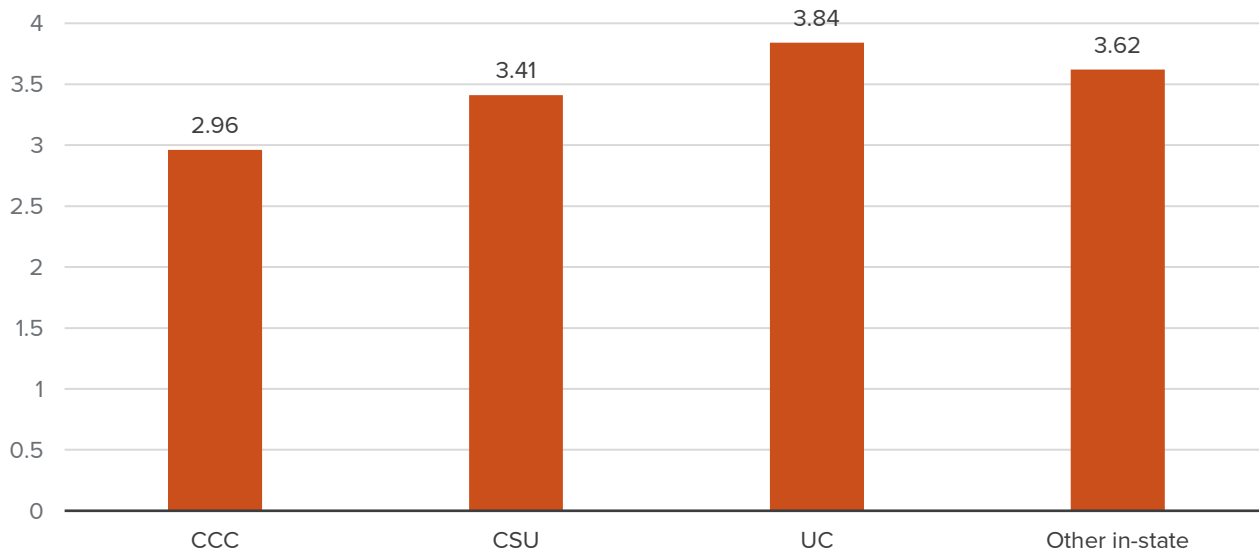
SOURCE: Authors' calculations using CSAC data.

NOTE: Sample is restricted to high school seniors in graduating cohorts of 2021-22 and 2022-23 in the CSAC data. Students are matched to NSC records, and those with college enrollment between July 1 of the high school graduation year and June 30 of the following year are counted as enrolled. FAFSA completion is measured by June 30 of the student's high school graduation year. Data are reshaped to the county level. Figures show changes from 2021-22 to 2022-23. Alpine County is missing from the figure as there was no 12th grade enrollment in 2021-22 and 2022-23 in the county. Figure is created using data from Technical Appendix Table B14.

### APPENDIX FIGURE B4

Median GPA of Cal Grant recipients enrolled in CCC is lower than those enrolled in other in-state sectors

Median GPA of Cal Grant recipients, HS class of 2023



SOURCE: Authors' calculations using CSAC data.

NOTE: Sample is restricted to students who received a payment from Cal Grants in the high school graduating cohort of 2023 in the CSAC Cal Grant applicant and payment data.

### APPENDIX TABLE B1

Trends in the financial aid pipeline

AY	Number of HS seniors [CDE]	Number of HS Seniors [CSAC]	Number of HS seniors who submitted FAFSA	Number of HS Seniors who submitted CADAA	Share of HS seniors who submitted FAFSA	Number of HS seniors who submitted FAFSA/CADAA	Share of HS seniors who submitted FAFSA/CADAA	Number of HS seniors who completed FAFSA	Share of submitted FAFSA that are completed	Share of HS seniors who completed FAFSA
2016-17	484,169	406,775	215,680	10,092	53%	225,772	56%	208,011	96%	51%
2017-18	489,221	446,511	247,234	10,198	55%	257,432	58%	238,551	96%	53%
2018-19	489,650	451,326	255,414	9,475	57%	264,889	59%	248,134	97%	55%
2019-20	486,592	463,864	272,182	9,068	59%	281,250	61%	262,515	96%	57%
2020-21	491,750	467,060	251,732	6,132	54%	257,864	55%	243,357	97%	52%
2021-22	495,327	463,609	250,888	6,268	54%	257,156	55%	242,522	97%	52%
2022-23	488,936	461,366	295,708	6,363	64%	302,071	65%	284,183	96%	62%

SOURCE: California Department of Education and CSAC

NOTES: FAFSA submission/completion cutoff date: June 30 of the student's high school graduation year.

## APPENDIX TABLE B2

### Cal Grant and Pell Grant trends

AY	Number of HS seniors awarded Cal Grant	Share of HS seniors who were awarded Cal Grant	Number of Pell-eligible HS seniors	Share of HS seniors who were Pell-eligible
2016-17	106,844	26%	131,233	32%
2017-18	125,693	28%	149,964	34%
2018-19	130,845	29%	153,680	34%
2019-20	135,505	29%	155,659	34%
2020-21	136,800	29%	137,669	29%
2021-22	133,159	29%	139,145	30%
2022-23	150,768	33%	168,876	37%

SOURCE: CSAC

NOTES: Pell eligibility based on FAFSA by June 30 of the student's high school graduation year.

## APPENDIX TABLE B3

### Number and share of seniors who enrolled in college within a year

AY	Number of HS seniors [CDE]	Number of HS seniors [CSAC]	Number of HS seniors enrolled in college within a year	Share of HS seniors who enrolled in college within a year	Number of HS seniors who enrolled in college with submitted FAFSA	Share of college-enrollees who submitted FAFSA	Number of HS seniors who enrolled in college with a completed FAFSA	Share of college-enrollees who completed FAFSA	Share of HS seniors who enrolled in college with a completed FAFSA
2017-18	489,221	446,511	276,115	62%	197,609	72%	193,763	70%	43%
2021-22	495,327	463,609	273,727	59%	195,827	72%	192,807	70%	42%
2022-23	488,936	461,366	285,627	62%	227,717	80%	223,651	78%	48%

SOURCE: California Department of Education and CSAC/NSC

NOTES: We count college enrollment between July 1 of the high school graduation year and June 30 in the following AY (e.g. for HS cohort of 2017-18, we count college enrollment from July 1, 2018-June 30, 2019). FAFSA submission/completion is measured by June 30 of the student's high school graduation year.

## APPENDIX TABLE B4

### Pell-eligible college-enrollees and in-state college enrollees who received Cal Grant

Cohort	Number of HS seniors who enrolled in college and were Pell-eligible	Share of college-enrollees who were Pell-eligible	Number of HS seniors who enrolled in in-state college	Number of in-state college enrollees who received Cal Grant	Share of in-state college enrollees who received Cal Grant
2017-18	116,212	42%	250,255	77,745	31%
2021-22	104,219	38%	245,774	66,763	27%
2022-23	124,602	44%	259,575	74,399	29%

SOURCE: CSAC/NSC

NOTES: We count college enrollment between July 1 of the high school graduation year and June 30 in the following AY (e.g. for HS cohort of 2017-18, we count college enrollment from July 1, 2018-June 30, 2019).

## APPENDIX TABLE B5

### Overall college-going rates

Cohort	HS completers	HS completers enrolled in college	College-going rate from CDE
2014-15	430,696	277,720	65%
2015-16	432,407	289,305	67%
2016-17	431,713	281,308	65%
2017-18	440,515	298,226	68%
2018-19	440,300	285,589	65%
2019-20	437,375	274,395	63%
2020-21	435,202	270,876	62%
2021-22	456,167	282,972	62%
2022-23	442,474	290,577	66%

SOURCE: From California Department of Education Dataquest.

NOTES: The table uses 12-month college-going rates.

## APPENDIX TABLE B6

### College-going rates by higher education sector

AY	Number of students enrolled in college within an AY	Number of students enrolled in CCC	Number of students enrolled in CSU	Number of students enrolled in UC	Number of students enrolled in other in-state 2-year	Number of students enrolled in other in-state 4-year	Number of students enrolled in out-of-state 2-year	Number of students enrolled in out-of-state 4-year
2017-18	276,115	171,338	52,812	29,843	1,085	12,649	2,918	27,102
2021-22	273,727	161,101	54,360	34,009	1,579	11,482	2,795	29,512
2022-23	285,627	170,887	57,343	36,226	1,706	11,207	2,420	27,725

AY	Number of students enrolled in college within an AY	Share of students enrolled in CCC	Share of students enrolled in CSU	Share of students enrolled in UC	Share of students enrolled in other in-state 2-year	Share of students enrolled in other in-state 4-year	Share of students enrolled in out-of-state 2-year	Share of students enrolled in out-of-state 4-year
2017-18	276,115	62%	19%	11%	0%	5%	1%	10%
2021-22	273,727	59%	20%	12%	1%	4%	1%	11%
2022-23	285,627	60%	20%	13%	1%	4%	1%	10%

SOURCE: CSAC/NSC

NOTES: Sample consists of HS seniors in CSAC-NSC dataset. Students with college enrollment records in NSC between July 1 of the high school graduation year and June 30 of the following year are counted as enrolled. Please note that the shares add up to slightly over 100% because some students transferred between sectors within their first year, and we count each student in every sector they enrolled in.

**APPENDIX TABLE B7**

Financial Aid take-up by college enrollees by higher education sector

Sector	AY	Number of students enrolled in sector	Number of Pell eligible enrollees in sector	Share of Pell eligible enrollees in sector	Number of Cal Grant recipients in sector	Share of Cal Grant recipients in sector
CCC	2017-18	171,338	74,874	44%	39,828	23%
	2021-22	161,101	62,178	39%	28,814	18%
	2022-23	170,887	77,085	45%	32,605	19%
CSU	2017-18	52,812	26,291	50%	26,676	51%
	2021-22	54,360	26,116	48%	24,995	46%
	2022-23	57,343	29,875	52%	27,269	48%
UC	2017-18	29,843	12,207	41%	14,332	48%
	2021-22	34,009	12,666	37%	15,237	45%
	2022-23	36,226	14,290	39%	16,871	47%
Other in-state 2-year	2017-18	1,085	484	45%	104	10%
	2021-22	1,579	725	46%	96	6%
	2022-23	1,706	965	57%	139	8%
Other in-state 4-year	2017-18	12,649	4,444	35%	5,039	40%
	2021-22	11,482	3,603	31%	4,305	37%
	2022-23	11,207	3,995	36%	4,628	41%
Out-of-state 2-year	2017-18	2,918	773	26%	NA	NA
	2021-22	2,795	560	20%	NA	NA
	2022-23	2,420	579	24%	NA	NA
Out-of-state 4-year	2017-18	27,102	5,696	21%	NA	NA
	2021-22	29,512	5,213	18%	NA	NA
	2022-23	27,725	5,328	19%	NA	NA

SOURCE: CSAC/NSC

NOTES: Students with college enrollment between July 1 of the high school graduation year and June 30 of the following year are counted as enrolled.

## APPENDIX TABLE B8

### FAFSA completion rate by higher education sector

AY		Number of students enrolled in CCC	Number of students enrolled in CSU	Number of students enrolled in UC
2017-18	Completed FAFSA	117,730	42,326	24,718
	All enrolled	171,338	52,812	29,843
	Share of college enrollees w/ completed FAFSA	69%	80%	83%
2021-22	Completed FAFSA	113,159	42,819	26,899
	All enrolled	161,101	54,360	34,009
	Share of college enrollees w/ completed FAFSA	70%	79%	79%
2022-23	Completed FAFSA	132,889	48,889	30,920
	All enrolled	170,887	57,343	36,226
2022-23	Share of college enrollees w/ completed FAFSA	78%	85%	85%

SOURCE: CSAC/NSC

NOTES: Students with college enrollment between July 1 of the high school graduation year and June 30 of the following year are counted as enrolled. FAFSA completion is measured based on the CCC deadline of September 2 for enrollees at CCC and on the UC/CSU deadline of March 2 for enrollees at UC/CSU.

## APPENDIX TABLE B9

### College going by first-generation status

First Generation Status	AY	Number of students who completed FAFSA by June 30 of HS graduation year	Number of students who enrolled in college w/ completed FAFSA by June 30 of HS graduation year	CCC w/ completed FAFSA	CSU w/ completed FAFSA	UC w/ completed FAFSA
First Gen (neither parent indicates college degree or above)	2021-22	122,325	90,413	57,986	22,731	10,232
	2022-23	145,118	105,552	68,244	25,451	11,545
	% increase 22-23	19%	17%	18%	12%	13%
Not First Gen (at least one parent indicates college degree or above)	2021-22	120,197	102,394	55,173	20,088	16,667
	2022-23	139,065	118,099	64,645	23,438	19,375
	% increase 22-23	16%	15%	17%	17%	16%

SOURCE: CSAC/NSC

NOTES: Students with college enrollment between July 1 of the high school graduation year and June 30 of the following year are counted as enrolled. FAFSA completion is measured based on the CCC deadline of September 2 for enrollees at CCC and on the UC/CSU deadline of March 2 for enrollees at UC/CSU.

**APPENDIX TABLE B10**

College going by Expected Family Contribution (EFC)

EFC	AY	Number of students who completed FAFSA by June 30 of HS graduation year	Number of students who enrolled in college with a completed FAFSA by June 30 of HS graduation year	CCC w/ completed FAFSA	CSU w/ completed FAFSA	UC w/ completed FAFSA
0	2021-22	81,042	58,388	37,804	14,204	6,659
	2022-23	99,997	70,764	46,555	16,477	7,534
	% increase 22-23	23%	21%	23%	16%	13%
1-6,499	2021-22	60,305	47,263	29,663	11,423	5,956
	2022-23	69,054	53,549	33,870	12,634	6,529
	% increase 22-23	15%	13%	14%	11%	10%
6,500-24,999	2021-22	45,403	37,565	23,141	7,938	4,878
	2022-23	51,023	42,050	26,382	8,890	5,343
	% increase 22-23	12%	12%	14%	12%	10%
25,000+	2021-22	55,772	49,591	22,551	9,254	9,406
	2022-23	64,109	57,288	26,082	10,888	11,514
	% increase 22-23	15%	16%	16%	18%	22%

SOURCE: CSAC/NSC

NOTES: Students with college enrollment between July 1 of the high school graduation year and June 30 of the following year are counted as enrolled. FAFSA completion is measured based on the CCC deadline of September 2 for enrollees at CCC and on the UC/CSU deadline of March 2 for enrollees at UC/CSU.

**APPENDIX TABLE B11**

College going by share of free/reduced price meal students in school

Share of school-level FRPM students in 2021-22	AY	Number of students who completed FAFSA by June 30 of HS graduation year	Number of students who enrolled in college with a completed FAFSA by June 30 of HS graduation year	Number of HS seniors	Number of HS seniors enrolled in college	College-going rate	CCC w/ completed FAFSA	CSU w/ completed FAFSA	UC w/ completed FAFSA
[0, 0.25)	2021-22	39,773	36,186	70,725	56,499	80%	17,293	5,764	6,605
	2022-23	44,409	40,525	68,824	56,137	82%	19,241	6,663	7,892
	% increase 22-23	12%	12%			1.7%	11%	16%	19%
[0.25, 0.5)	2021-22	58,859	50,495	111,666	74,902	67%	30,115	10,010	7,249
	2022-23	68,105	58,349	112,064	77,520	69%	35,645	11,385	8,175
	% increase 22-23	16%	16%			2.1%	18%	14%	13%
[0.5, 0.75)	2021-22	71,592	56,023	142,262	76,775	54%	36,032	12,599	6,904
	2022-23	84,906	65,621	142,141	81,485	57%	42,145	14,486	7,868
	% increase 22-23	19%	17%			3.4%	17%	15%	14%

[0.75, 1]	2021-22	71,082	49,255	139,834	63,912	46%	29,177	14,278	6,077
	2022-23	85,211	58,114	140,893	68,883	49%	35,277	16,132	6,888
	% increase 22-23	20%	18%			3.2%	21%	13%	13%

SOURCE: CSAC/NSC

NOTES: Students with college enrollment between July 1 of the high school graduation year and June 30 of the following year are counted as enrolled. FAFSA completion is measured based on the CCC deadline of September 2 for enrollees at CCC and on the UC/CSU deadline of March 2 for enrollees at UC/CSU.

## APPENDIX TABLE B12

College going by share of school-level racially/ethnically underserved students

Share of school-level racial/ethnicity underserved students in 2021-22	AY	Number of students who completed FAFSA by June 30 of HS graduation year	Number of students who enrolled in college with a completed FAFSA by June 30 of HS graduation year	Number of HS seniors	Number of HS seniors enrolled in college	College-going rate	CCC w/ completed FAFSA	CSU w/ completed FAFSA	UC w/ completed FAFSA
[0, 0.25)	2021-22	31,021	28,000	55,598	43,657	79%	13,207	4,116	5,783
	2022-23	36,893	33,395	54,467	43,378	80%	16,258	5,081	6,915
	% increase 22-23	19%	19%			1.1%	23%	23%	20%
[0.25, 0.5)	2021-22	57,833	49,995	108,505	73,798	68%	28,920	9,604	7,207
	2022-23	65,642	56,923	108,424	76,122	70%	33,312	11,022	8,247
	% increase 22-23	14%	14%			2.2%	15%	15%	14%
[0.5, 0.75)	2021-22	55,608	44,689	114,992	65,333	57%	27,984	9,841	5,702
	2022-23	65,435	52,159	113,985	68,659	60%	33,182	11,227	6,430
	% increase 22-23	18%	17%			3.4%	19%	14%	13%
[0.75, 1]	2021-22	96,568	69,042	184,972	89,038	48%	42,420	18,983	8,100
	2022-23	114,410	79,924	186,659	95,623	51%	49,460	21,256	9,194
	% increase 22-23	18%	16%			3.1%	17%	12%	14%

SOURCE: CSAC/NSC

NOTES: Students with college enrollment between July 1 of the high school graduation year and June 30 of the following year are counted as enrolled. FAFSA completion is measured based on the CCC deadline of September 2 for enrollees at CCC and on the UC/CSU deadline of March 2 for enrollees at UC/CSU. Racially/ethnically underserved minority defined as Black/Latino/ American Indian or Alaska Native/Pacific Islander.

**APPENDIX TABLE B13**

Number and share of students who received CG by CG type and HE sector

2021-22

	<u>Any CG</u>	Avg. amount (\$)	Median GPA	<u>CGA</u>	% of any CG	Avg. amount (\$)	Median GPA	<u>CGB</u>	% of any CG	Avg. amount (\$)	Median GPA	<u>CGC</u>	% of any CG	Avg. amount (\$)	Median GPA
CCC	26,007	1266	3.04	5	0%	1200	3.28	25,877	99.5%	1270	3.05	125	0.5%	512	2.56
% of any in-state	35%			0%				55%				86%			
CSU	26,056	2613	3.43	5,987	23%	5289	3.60	20,069	77%	1814	3.36	0	0.0%	-	-
% of any in-state	36%			23%				43%				0%			
UC	16,239	12465	3.83	16,050	99%	12580	3.84	189	1%	2645	2.89	0	0.0%	-	-
% of any in-state	22%			61%				0%				0%			
Other in-state	5,156	7510	3.61	4,381	85%	8572	3.68	755	15%	1470	2.78	20	0.4%	2896	2.60
% of any in-state	7%			17%				2%				14%			
<u>Any in-state</u>	<b>73,322</b>	4667	3.46	<b>26,402</b>	36%	10271	3.77	<b>46,775</b>	64%	1516	3.19	<b>145</b>	0.2%	840	2.57

2022-23

	<u>Any CG</u>	Avg. amount (\$)	Median GPA	<u>CGA</u>	% of any CG	Avg. amount (\$)	Median GPA	<u>CGB</u>	% of any CG	Avg. amount (\$)	Median GPA	<u>CGC</u>	% of any CG	Avg. amount (\$)	Median GPA
CCC	30,281	1270	2.96	3	0%	275	3.54	30,021	99%	1277	2.96	257	0.8%	483	2.39
% of any in-state	37%			0%				57%				84%			
CSU	28,361	2691	3.41	6,860	24%	5322	3.59	21,501	76%	1851	3.33	0	0.0%	-	-
% of any in-state	35%			24%				41%				0%			
UC	17,920	13032	3.84	17,669	99%	13180	3.85	251	1%	2588	2.88	0	0.0%	-	-
% of any in-state	22%			61%				0%				0%			
Other in-state	5,443	7485	3.62	4,558	84%	8639	3.70	836	15%	1475	2.73	49	0.9%	2763	2.45
% of any in-state	7%			16%				2%				16%			
<u>Any in-state</u>	<b>81,861</b>	4753	3.43	<b>29,073</b>	36%	10622	3.77	<b>52,482</b>	64%	1525	3.13	<b>306</b>	0.4%	848	2.41

SOURCE: CSAC

NOTES: HE sector flagged with college that student received payment from the CG payment data.

**APPENDIX TABLE B14**

FAFSA completion and college-going rate by region

County Name	Share of HS seniors who completed FAFSA, 2021-22	Share of HS seniors who completed FAFSA, 2022-23	Change in share of HS seniors who completed FAFSA, Class of 22 to 23	College-going rate, 21-22	College-going rate, 22-23	Change in college-going rate from Class of 2022 to 23	Share of HS seniors who enrolled in college with a completed FAFSA, 2021-22	Share of HS seniors who enrolled in college with a completed FAFSA, 2021-22	Change in share of HS seniors who enrolled in college with a completed FAFSA, Class of 22 to 23
ALAMEDA	49	56	7	65	68	3	41	48	7
AMADOR	40	49	10	43	43	0	31	36	4
BUTTE	19	55	37	61	62	1	16	49	33
CALAVERAS	22	58	37	55	57	2	19	44	25
COLUSA	52	62	9	53	54	1	42	48	6
CONTRA COSTA	49	59	10	68	69	2	43	51	8
DEL NORTE	38	47	10	35	42	7	26	36	10
EL DORADO	52	59	6	61	65	4	46	51	5
FRESNO	64	68	4	61	64	3	51	55	4
GLENN	55	62	6	56	57	1	47	49	2
HUMBOLDT	54	42	-12	51	57	6	41	34	-7
IMPERIAL	69	62	-6	71	74	3	58	54	-5
INYO	17	44	27	37	40	3	7	32	26
KERN	52	58	6	45	46	1	35	38	3
KINGS	37	58	22	54	59	5	30	48	19
LAKE	31	47	15	39	45	6	23	35	12
LASSEN	38	43	4	44	54	10	25	35	10
LOS ANGELES	57	65	9	56	59	3	42	48	6
MADERA	48	63	15	50	56	6	37	48	11
MARIN	52	61	10	75	77	1	45	55	11
MARIPOSA	54	50	-3	35	42	7	29	35	7
MENDOCINO	51	49	-2	50	55	5	39	40	1
MERCED	50	62	13	37	39	2	28	33	5
MODOC	70	56	-14	43	42	-1	42	34	-8
MONO	44	19	-25	53	54	1	36	13	-23
MONTEREY	50	67	16	60	64	4	40	54	14
NAPA	50	60	10	60	65	5	43	51	8
NEVADA	35	56	21	39	54	16	28	45	17
ORANGE	56	63	7	72	71	-1	50	55	5
PLACER	67	63	-3	72	70	-2	60	57	-3
PLUMAS	35	56	21	45	57	12	30	47	18
RIVERSIDE	57	68	10	51	52	1	41	45	4
SACRAMENTO	49	57	8	56	60	4	41	49	8
SAN BENITO	52	57	5	45	67	22	33	50	16
SAN BERNARDINO	37	50	13	51	53	3	29	37	8

County Name	Share of HS seniors who completed FAFSA, 2021-22	Share of HS seniors who completed FAFSA, 2022-23	Change in share of HS seniors who completed FAFSA, Class of 22 to 23	College-going rate, 21-22	College-going rate, 22-23	Change in college-going rate from Class of 2022 to 23	Share of HS seniors who enrolled in college with a completed FAFSA, 2021-22	Share of HS seniors who enrolled in college with a completed FAFSA, 2021-22	Change in share of HS seniors who enrolled in college with a completed FAFSA, Class of 22 to 23
SAN DIEGO	50	62	11	59	63	4	41	50	9
SAN FRANCISCO	64	71	7	65	73	8	54	62	7
SAN JOAQUIN	45	45	0	51	54	4	37	36	-1
SAN LUIS OBISPO	52	56	3	62	63	1	44	48	4
SAN MATEO	40	64	24	72	76	3	37	58	22
SANTA BARBARA	62	72	10	63	68	5	51	59	8
SANTA CLARA	50	59	10	71	74	4	44	53	9
SANTA CRUZ	46	51	5	69	70	1	40	44	4
SHASTA	49	56	7	50	55	5	38	44	6
SIERRA	90	81	-9	70	67	-3	65	62	-3
SISKIYOU	35	61	26	43	46	3	25	40	15
SOLANO	45	43	-2	55	56	1	38	35	-2
SONOMA	49	59	10	57	61	5	40	49	9
STANISLAUS	48	55	7	53	55	2	40	45	5
SUTTER	53	53	-1	57	54	-3	44	44	-1
TEHAMA	53	28	-26	43	44	1	38	19	-19
TRINITY	50	61	11	42	54	12	31	48	17
TULARE	40	61	21	56	57	1	32	46	14
TUOLUMNE	43	45	2	53	52	-1	37	39	2
VENTURA	54	65	11	67	71	4	49	58	9
YOLO	27	51	25	62	64	2	24	44	20
YUBA	43	52	9	45	49	4	32	39	7

SOURCE: CSAC/NSC

NOTE: Students with college enrollment between July 1 of the high school graduation year and June 30 of the following year are counted as enrolled. FAFSA completion is measured by June 30 of the student's high school graduation year



**PPIC**

PUBLIC POLICY  
INSTITUTE OF CALIFORNIA

The Public Policy Institute of California is dedicated to informing and improving public policy in California through independent, objective, nonpartisan research.

Public Policy Institute of California  
San Francisco, CA  
T: 415.291.4400  
F: 415.291.4401  
[PPIC.ORG](http://PPIC.ORG)

PPIC Sacramento Center  
Sacramento, CA  
T: 916.440.1120  
F: 916.440.1121