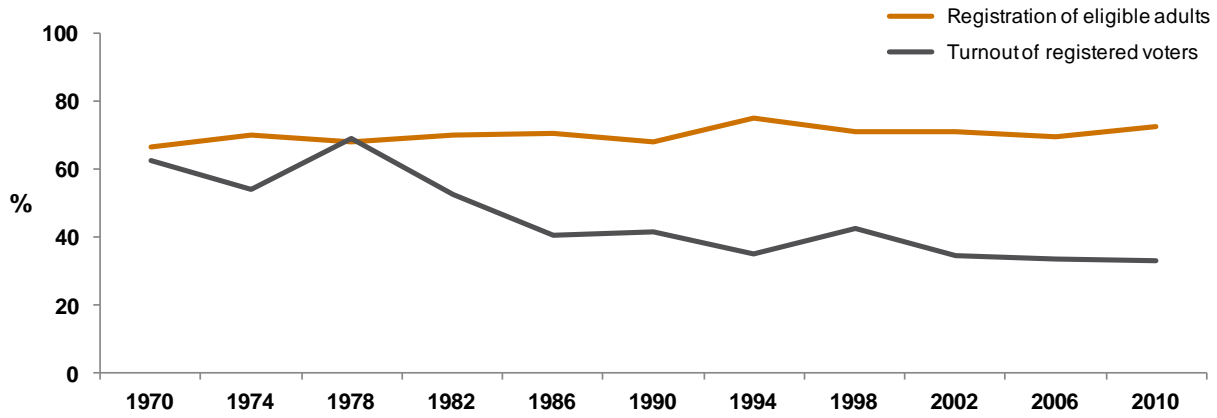


JULY 2010

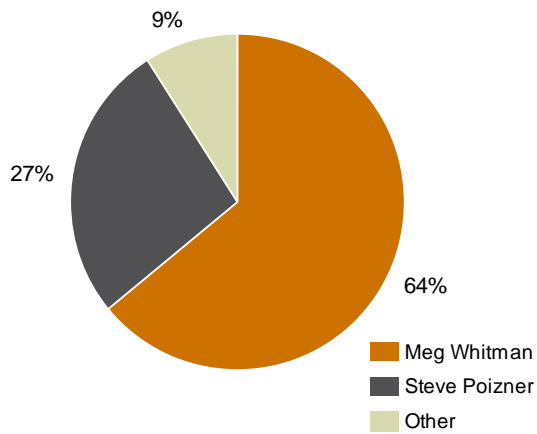
- **REGISTRATION IS HIGHER THAN LAST GUBERNATORIAL PRIMARY, BUT TURNOUT REACHES RECORD LOW.**
According to the 15-Day Report of Registration by the Secretary of State, approximately 23.5 million Californians were eligible to vote and nearly 17 million (72%) were registered before the June 8th primary, up 1.3 million from the 2006 gubernatorial primary. Of those registered, 44.5% were Democrats, 30.8% were Republicans, 4.5% were registered with another party, and a record high 20.2% declined to state a party. Turnout this June (33.3%) was lower than in the last gubernatorial primary (33.6%), and was a record low for a gubernatorial primary election in the state.
- **MEG WHITMAN WINS PRIMARY AND WILL FACE JERRY BROWN FOR THE GOVERNORSHIP.**
After spending about 80 million dollars and breaking state campaign spending records, Meg Whitman (64%) clinched the Republican nomination, defeating Steve Poizner (27%). Whitman received a majority of votes in all counties. Democrat Jerry Brown won handily with 84% support.
- **INCUMBENTS IN FOUR OTHER STATE EXECUTIVE OFFICES FACE REELECTION; THREE SEATS ARE OPEN.**
Democrat Gavin Newsom won the nomination for lieutenant governor and will challenge incumbent Republican Abel Maldonado, who was recently appointed to fill the vacant seat. Democratic incumbents in the offices of controller, secretary of state, and treasurer will all face Republican challengers. Both the attorney general and insurance commissioner seats are open, as is the office of state superintendent of public instruction (because the officeholder is termed out).
- **INCUMBENTS IN STATE LEGISLATURE MAINTAIN HOLD ON REELECTION BIDS.**
None of the incumbent state assembly members or senators was defeated by challengers in this primary. In special general elections, vacant Assembly District 43 and Senate District 37 were decided on June 8th; Senate District 15 will be decided in August. Democrats currently hold a majority in both the senate (25 Democrats, 14 Republicans, 1 vacant) and assembly (50 Democrats, 29 Republicans, 1 independent). In November, 20 of the 40 senate seats will be up for election: 10 races include incumbents, 10 are open (members are limited to two four-year terms). Seventy-nine assembly seats are up for election, with 28 open (members are limited to three two-year terms).
- **CARLY FIORINA TAKES GOP SENATE NOMINATION; ALL CONGRESSIONAL INCUMBENTS WIN.**
Carly Fiorina (56%) won the Republican Senate primary, defeating Tom Campbell (22%) and Chuck DeVore (19%). Fiorina received a plurality in all counties except San Francisco, San Mateo, Santa Clara, and Santa Cruz, where Campbell was supported. Fiorina will face Democratic senator Barbara Boxer, who was easily renominated (81%). Of California's 53 U.S. House members, 51 won their primary; two seats are open. The delegation consists of 34 Democrats and 19 Republicans.
- **VOTERS PASS PROPOSITIONS 13 AND 14 AND REJECT 15, 16 AND 17.**
Voters passed Proposition 14 (54% yes, 46% no), a legislative initiative changing primaries in California to allow voters, regardless of party affiliation, to select any candidate. It advances the two candidates with the most votes, regardless of party, to the general election. The change affects state and national races, not including presidential races. Proposition 13, limiting property tax assessment after seismic retrofits, passed easily. Voters rejected Proposition 15, a proposal to publicly fund secretary of state races. Proposition 16—requiring two-thirds voter approval to start local public electricity service—was defeated (47% yes, 53% no). Proposition 17, which would allow auto insurance companies to raise rates based on coverage history, also failed (48% yes, 52% no).



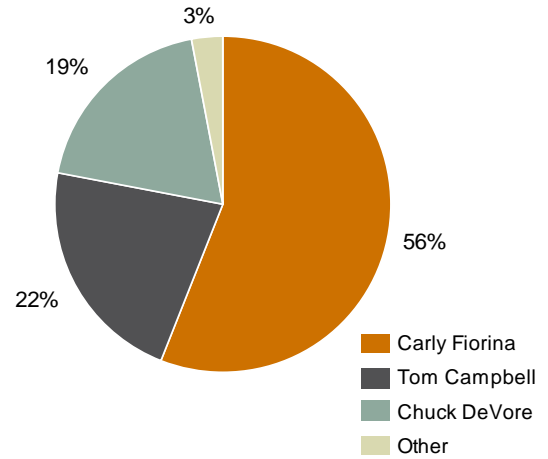
Voter Registration and Turnout in Gubernatorial Primaries



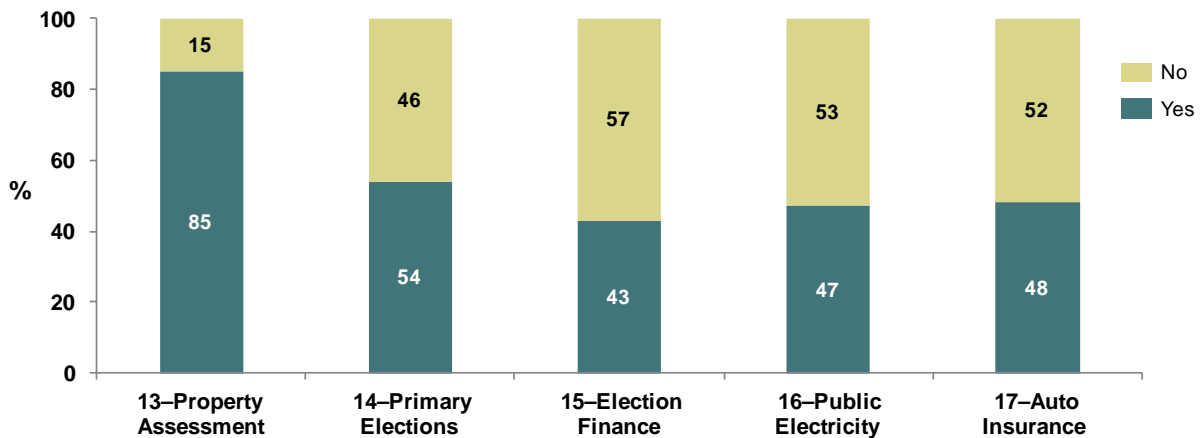
Republican Gubernatorial Primary



Republican Senate Primary



State Ballot Propositions



Source: California Secretary of State, Statement of Vote, June 8, 2010, Statewide Direct Primary Election.

Contact: survey@ppic.org



PPIC

PUBLIC POLICY
INSTITUTE OF CALIFORNIA

www.ppic.org