

The Impact of Budget Cuts on California's Community Colleges

Sarah Bohn, Hans Johnson, and
Belinda Reyes



California's community colleges are largest public higher ed system in US

- Provide widest access to higher education
- Serve multiple missions



CCC funding is at lowest level in two decades

- Cuts occurred across all missions of the CCCs
- Fewer faculty and staff per student
- 600,000 fewer students served

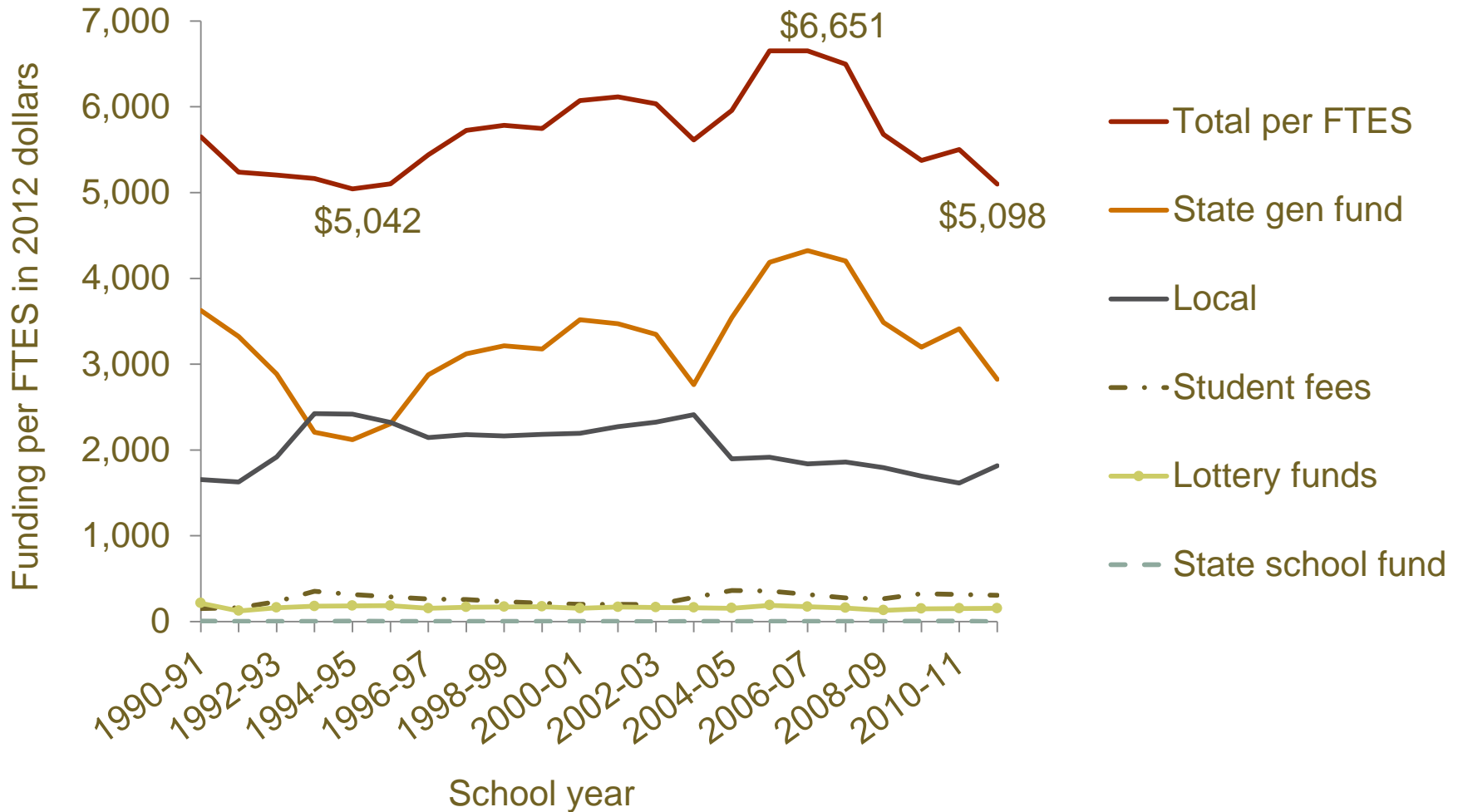


Outline

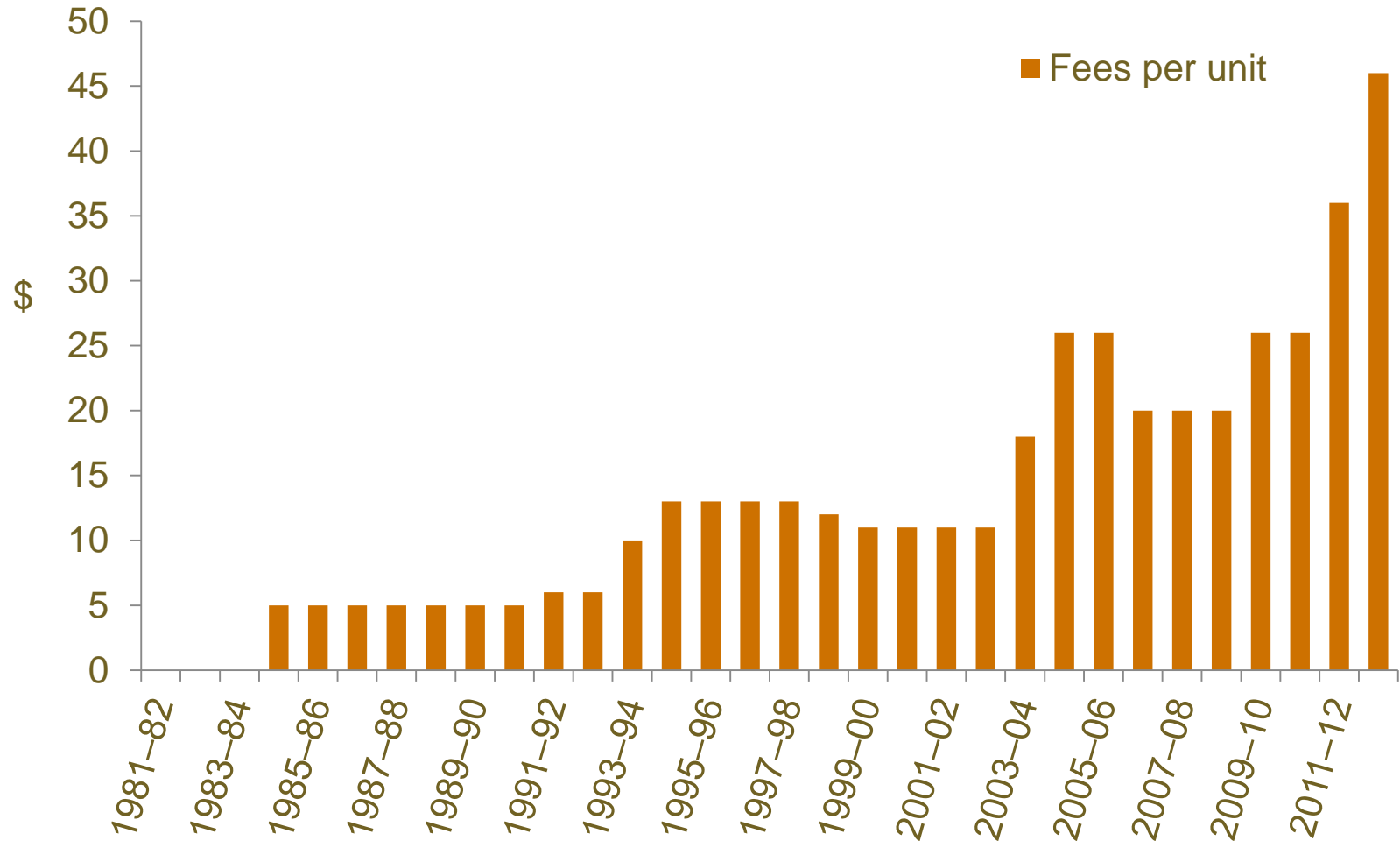
- Budget situation
- How colleges have adjusted
- Effects on students
- Conclusion



CCCs face ever-changing budgets



Student fees have more than doubled in recent years



Senior administrators are concerned

- Institutions are in “fair” health (40%)
- Most important challenges in next two years
 - Budget constraints
 - Declining state support

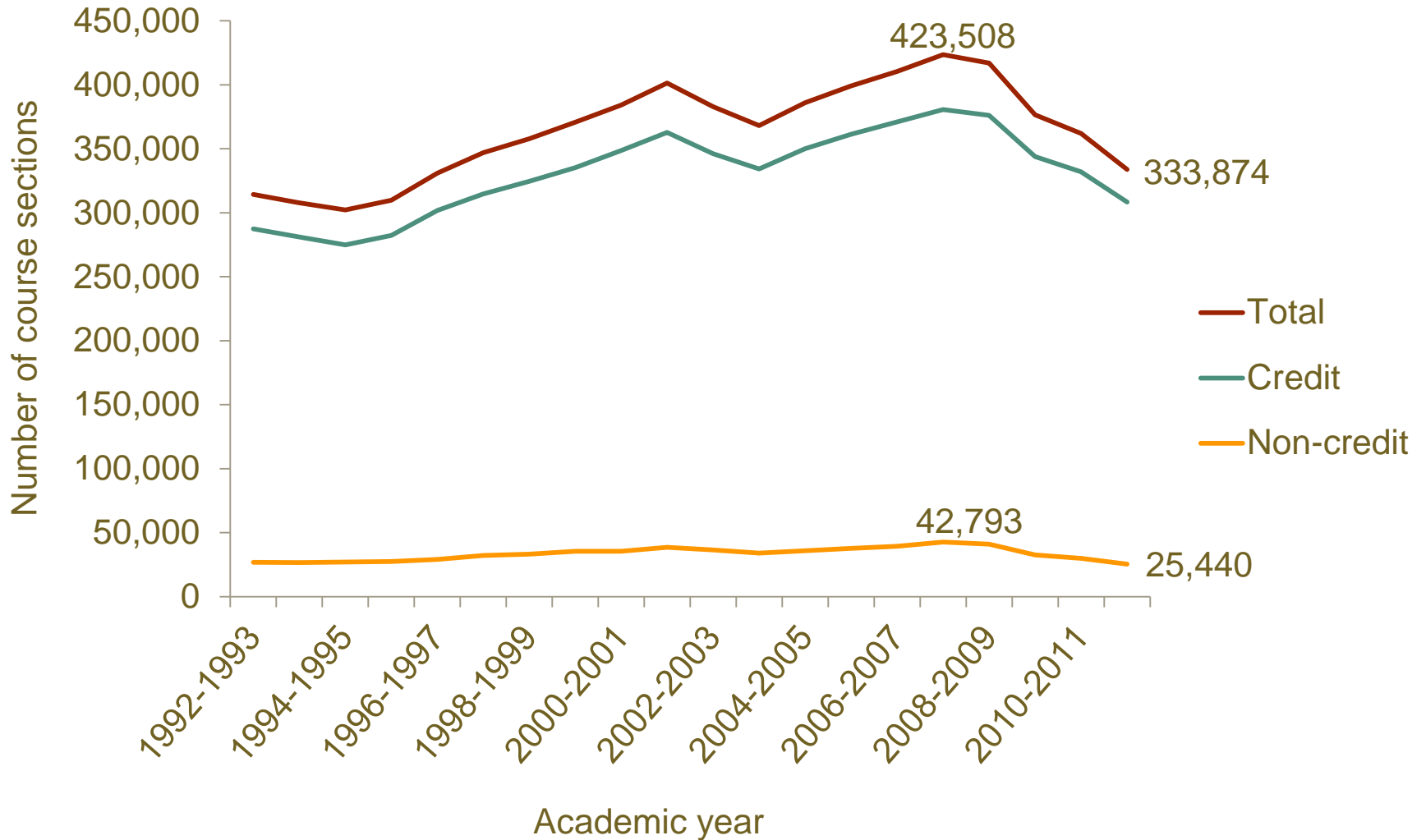


Outline

- Budget situation
- How colleges have adjusted
- Effects on students
- Conclusion

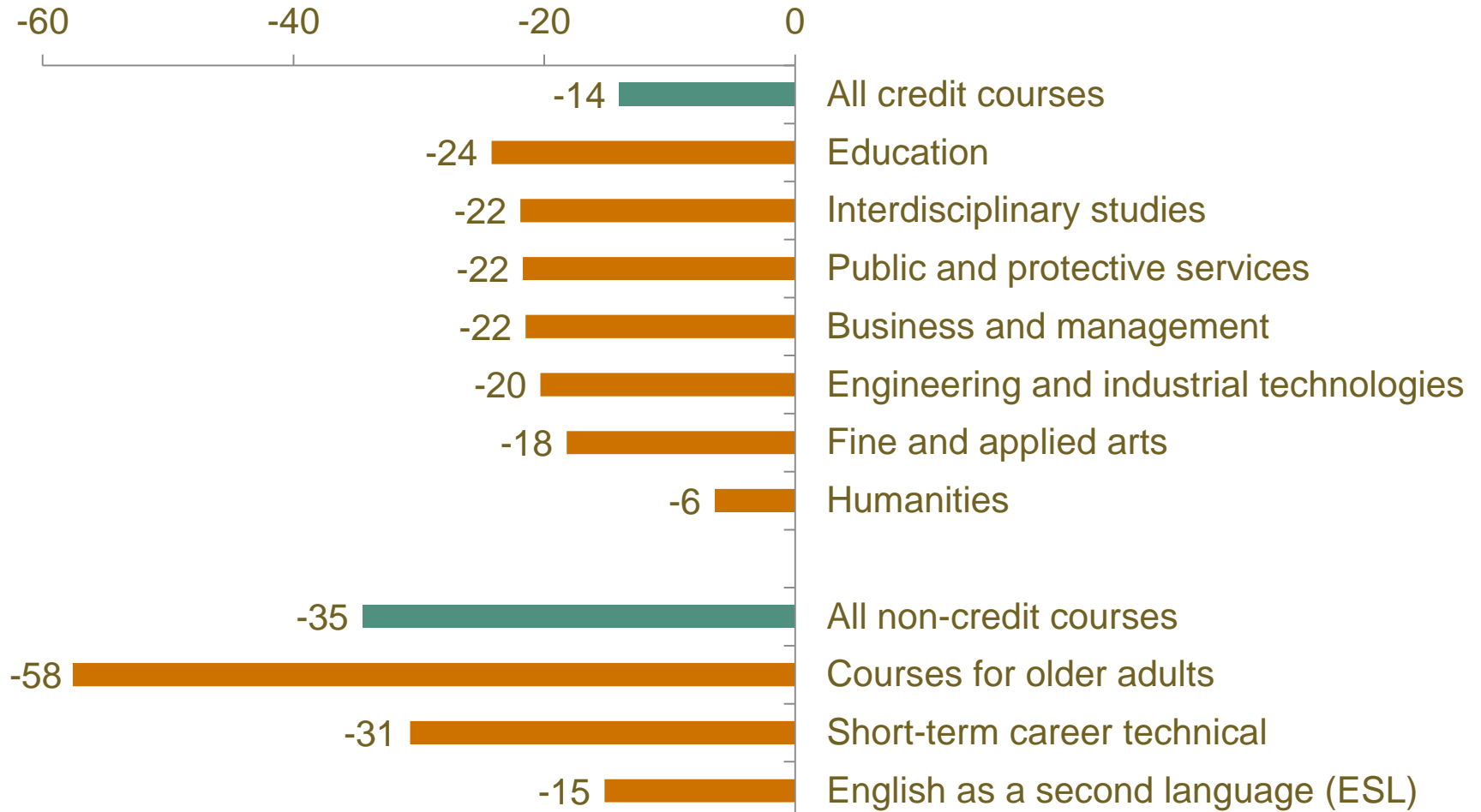


Course offerings have declined dramatically...

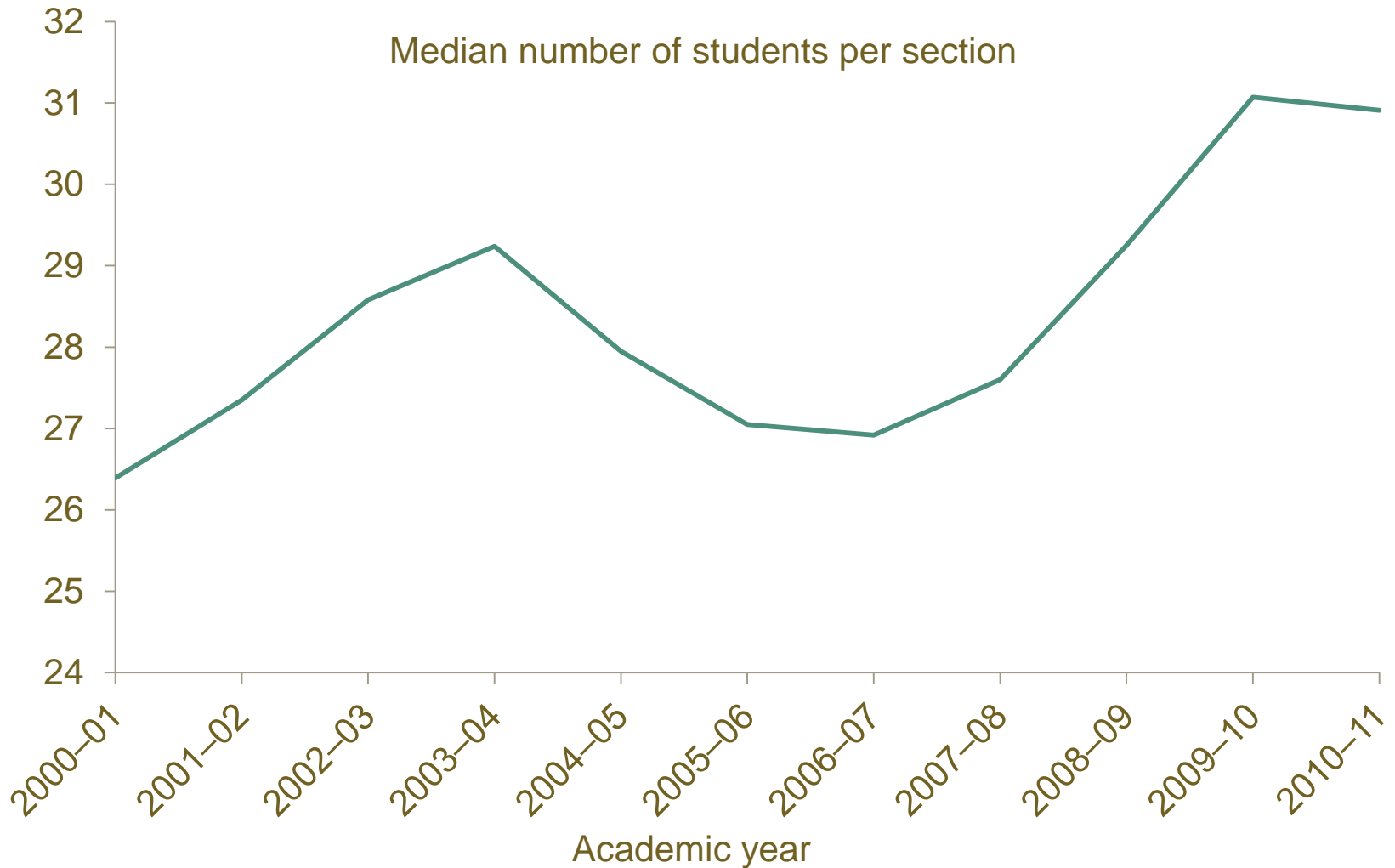


...in all areas

Percent change, fall 2008 to fall 2011



Fewer courses and more students mean larger section sizes

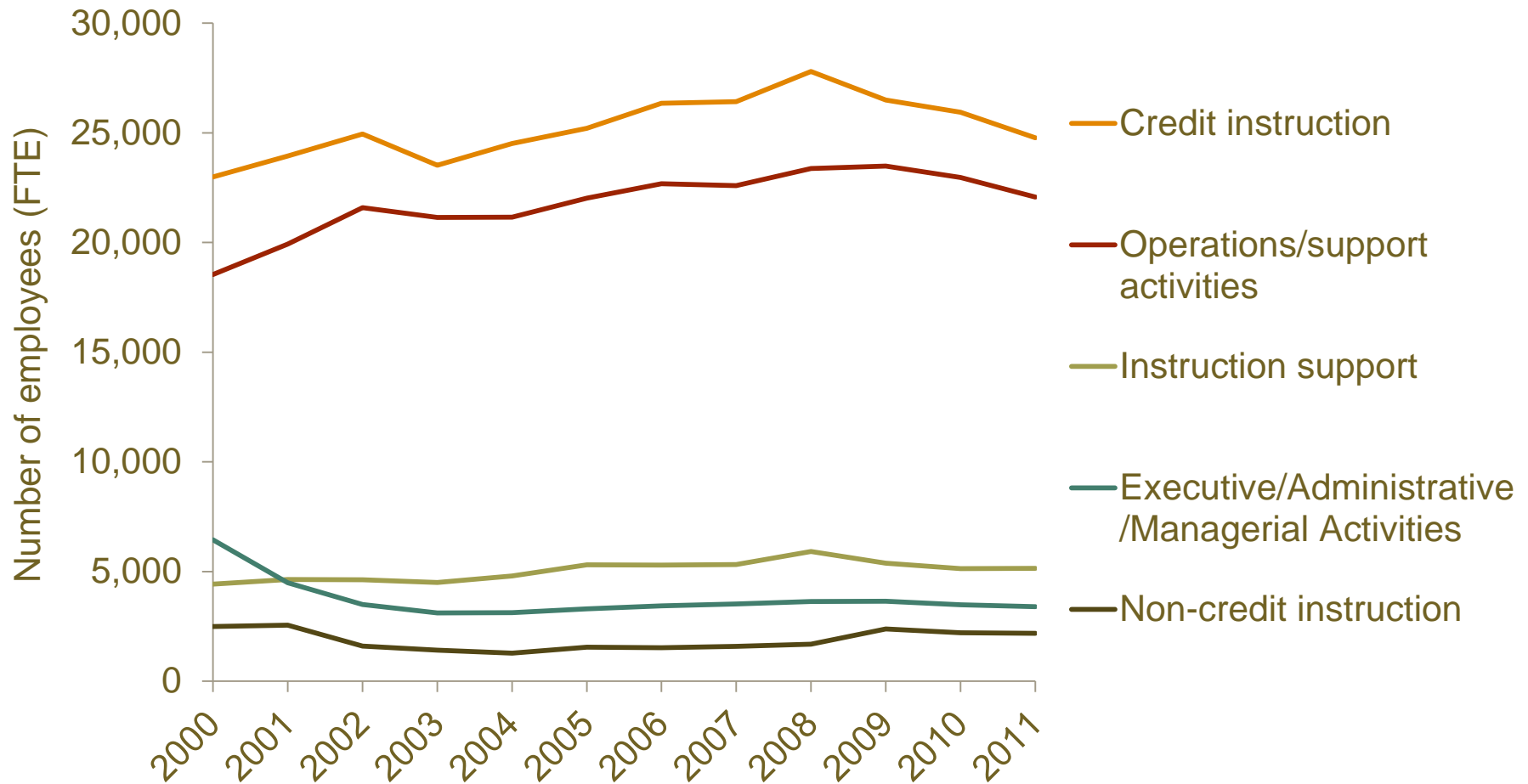


Students are having trouble getting classes they need

- 79% of administrators say wait lists have grown over the past two years
- 85% of colleges had wait lists
 - Almost 500,000 students in total



Most staffing cuts have occurred in credit courses

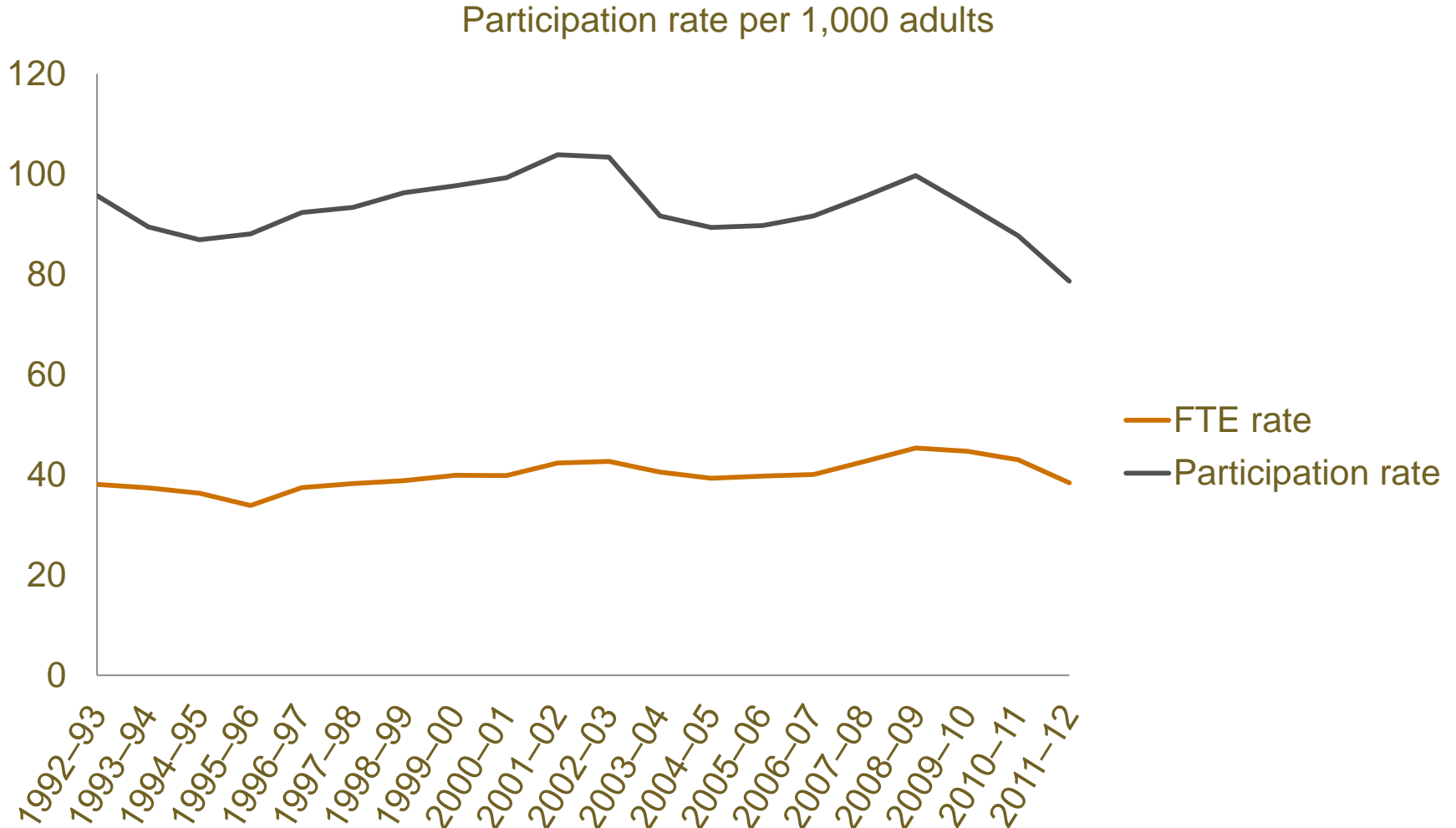


Outline

- Budget situation
- How colleges have adjusted
- Effects on students
- Conclusion



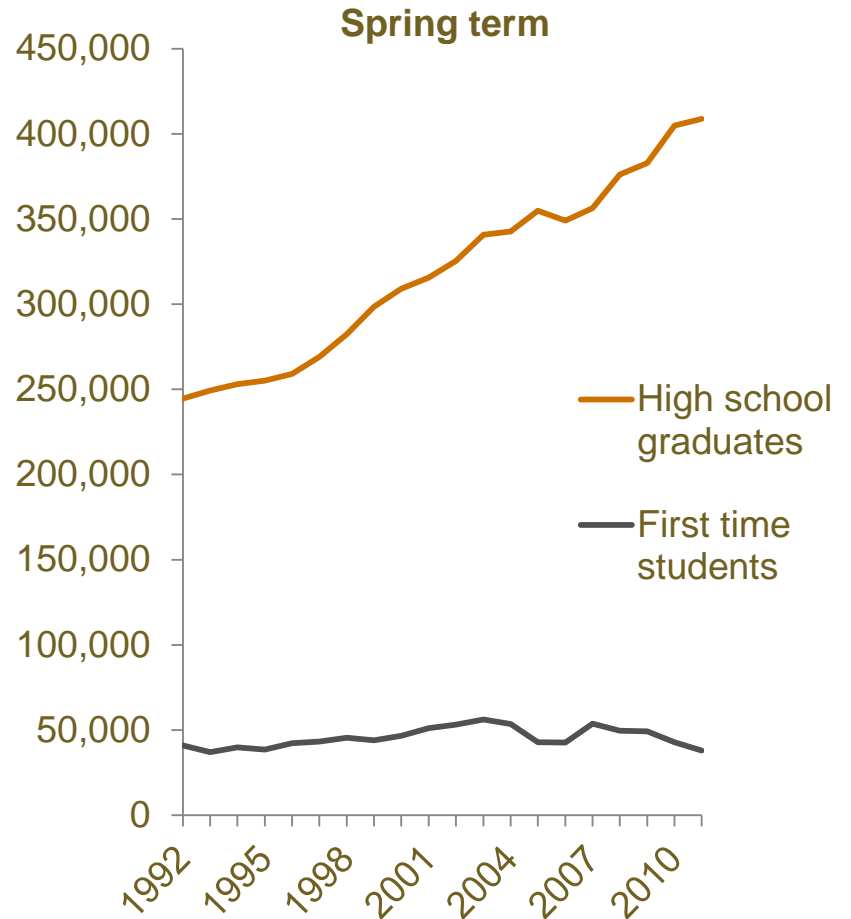
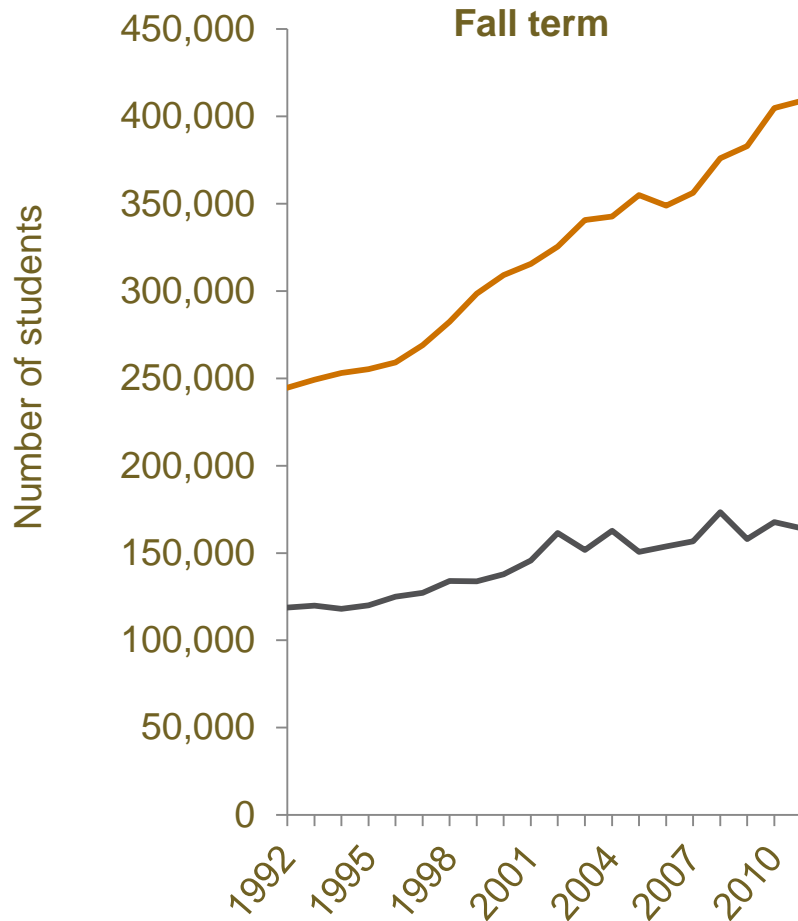
Participation rates are at the lowest levels in decades



Continuing students are the only group with enrollment increases

	Enrollment (FTE in fall/spring)		<u>Percent change</u>
	<u>2008-09</u>	<u>2011-12</u>	
State total	3,606,612	3,289,507	-9%
Continuing students	1,911,483	2,100,915	10%
Returning students	549,394	376,329	-32%
First-time students	467,493	380,914	-19%

Number of first time freshmen not keeping pace with high school graduates



Enrollment in transfer courses has declined the least

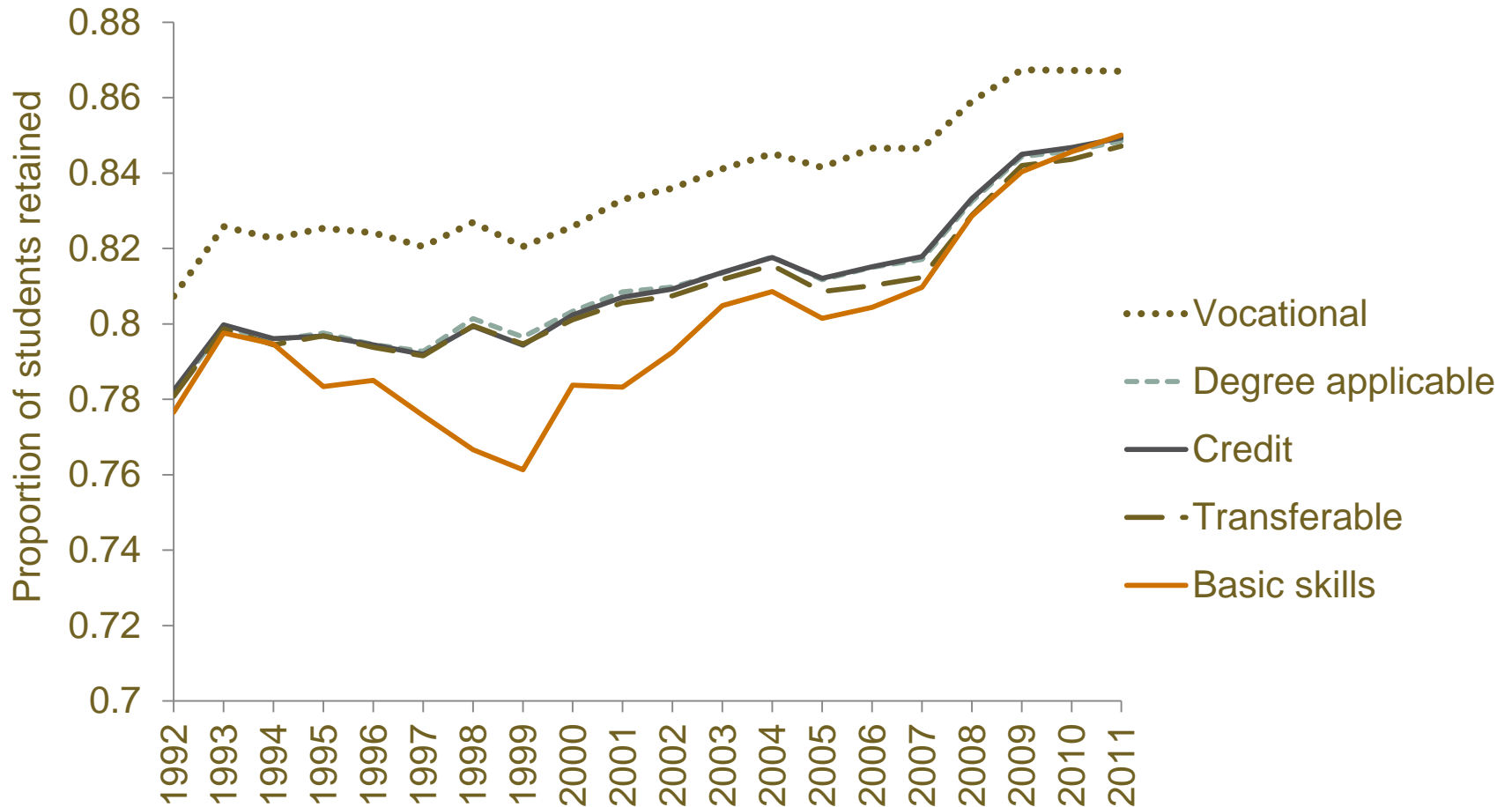
	Fall 2008	Fall 2011	Spring 2009	Spring 2012	Fall change (%)	Spring change (%)
Transferable credit	400,258	394,473	406,119	391,666	-1	-4
Basic skills total	65,968	57,776	61,319	55,570	-12	-9
Vocational education total	169,650	159,647	173,182	157,295	-6	-9

Make-up of student body has shifted

- Age
 - Largest percent decline among youngest (<18) and oldest (>50)
 - Largest numerical decline among 18-19 year olds
- Ethnicity
 - Declines across all groups in enrollment and participation rate
 - But Latino student population relatively stable



Improvements in course completion



Outline

- Budget situation
- How colleges have adjusted
- Effects on students
- Conclusion



California needs to improve college-going rate *and* success rate

- Recent focus has been on student success
 - But dramatic decline in access deserves attention
- Setting priorities
 - Who should be served?
 - How to fund?
- Options
 - Restore funding
 - Find new funding sources
 - Find new efficiencies



The Impact of Budget Cuts on California's Community Colleges

Sarah Bohn, Hans Johnson, and
Belinda Reyes



Notes on the use of these slides

These slides were created to accompany a presentation. They do not include full documentation of sources, data samples, methods, and interpretations. To avoid misinterpretations, please contact:

Sarah Bohn (bohn@ppic.org; 415-291-4413)
Hans Johnson (johnson@ppic.org; 415-291-4460)
Belinda Reyes (reyesb@sfsu.edu; 415-405-7586)

Thank you for your interest in this work.

