

CALIFORNIANS' ATTITUDES TOWARD SAME-SEX MARRIAGE

Sonja Petek

► **In the wake of the June 2013 U.S. Supreme Court decision, support for same-sex marriage is at a new high.**

PPIC's September 2013 statewide survey found that a record high 61% of Californians and 64% of likely voters favor allowing gay and lesbian couples to legally marry (34% of adults and 32% of likely voters oppose). Solid majorities of Californians (59%) and likely voters (63%) approve of the U.S. Supreme Court's decision to let stand a lower court ruling on Proposition 8 that allows gay marriage in California.

► **Public opinion has undergone a reversal since 2000.**

In January 2000, the first time PPIC asked about legalizing same-sex marriage, 39% of Californians were in favor and 55% were opposed. In October 2008, just before the passage of Proposition 8 (which banned same-sex marriage), 44% were in favor of allowing gays and lesbians to marry. Support for same-sex marriage moved above 50% in 2010, and the margin of support has continued to grow. Support has risen 5 points since May 2013, just before the U.S. Supreme Court issued its ruling.

► **Since October 2008, support has risen by double digits among Democrats, independents, and Republicans.**

Although support for allowing same-sex marriage is still far higher among Democrats (76%, up 20 points since October 2008) and independents (67%, up 14 points), it has nearly doubled among Republicans (from 23% to 44%, with 53% opposed).

► **A majority of older Californians now favor allowing gay marriage; support is also up among other groups.**

For the first time, a majority of Californians age 55 and older favor allowing same-sex marriage (55% favor, 39% oppose)—a near reversal of opinion since October 2008 (34% favor, 58% opposed). Support for same-sex marriage has grown a considerable 15 points among younger Californians, age 18–34 (from 53% to 68%), and 13 points among those age 35–54 (from 45% to 58%). Majorities of women (66%, up 19 points) and men (55%, up 13 points) now support same-sex marriage. A majority of parents expressed opposition in 2008 (42% favor, 54% opposed), but now the reverse is true (53% favor, 42% oppose). There have been double-digit increases in support among Latinos (from 36% to 54%) and whites (from 50% to 65%).

► **Support is still highest in the San Francisco Bay Area and Los Angeles, but it has risen in all regions.**

More than six in 10 residents in the San Francisco Bay Area (73%, up 15 points since 2008) and Los Angeles (64%, up 20 points) favor allowing same-sex marriage. In "other Southern California" (Orange, San Diego, Riverside, and San Bernardino Counties), support has increased 14 points to 55% (42% oppose). Central Valley residents are divided on this issue (49% favor, 44% oppose), although support has grown 11 points since 2008.

► **Record shares of mainline Protestants and Catholics express support.**

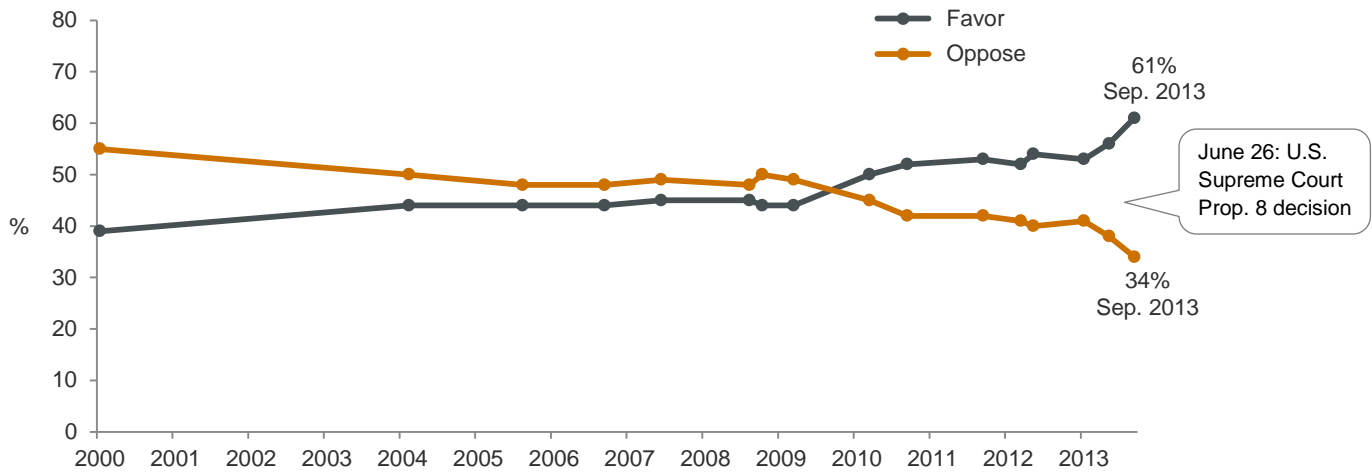
A strong majority of mainline Protestants (70%, up 26 points since 2008) now favor allowing same-sex marriage and support has grown 17 points among Catholics (from 42% to 59%). Most evangelical Protestants (67%) remain opposed to same-sex marriage, although support has increased somewhat since 2008 (from 15% to 23%).

► **Similar trends in public opinion are evident nationwide.**

Same-sex marriage is now legal in the District of Columbia and 19 states; in 10 of these states it became legal after the June 2013 Supreme Court decision. In 12 additional states, court decisions in favor of same-sex marriage are being appealed. Growing acceptance among the public is reflected in numerous national polls: surveys by ABC News/Washington Post, Bloomberg, CBS News/New York Times, Gallup, NBC News/Wall Street Journal, and the Pew Research Center, among others, find majorities of adults in favor of allowing same-sex marriage.



A record share of Californians support same-sex marriage



Source: PPIC Statewide Surveys, January 2000–September 2013.

Note: Dots indicate dates on which the question was asked in PPIC Statewide Surveys.

Since the 2008 election, support has increased universally

% who favor allowing same-sex marriage		October 2008	September 2013	Change
All adults		44%	61%	+ 17
Party registration	Democrats	56	76	+ 20
	Republicans	23	44	+ 21
	Independents	53	67	+ 14
Age	18–34	53	68	+ 15
	35–54	45	58	+ 13
	55 and older	34	55	+ 21
Gender	Men	42	55	+ 13
	Women	47	66	+ 19
Education	High school or less	33	48	+ 15
	Some college	45	67	+ 22
	College graduate	53	72	+ 19
Parents of children 18 or younger	Yes	42	53	+ 11
	No	47	65	+ 18
Race/ethnicity	Latinos	36	54	+ 18
	Whites	50	65	+ 15
Religious affiliation	Evangelical Protestants	15	23	+ 8
	Mainline Protestants	44	70	+ 26
	Catholics	42	59	+ 17
	No religion	77	82	+ 5

Source: PPIC Statewide Surveys, October 2008 and September 2013. Margin of error for all adults is ±2% in October 2008 and ±3.7% in September 2013; the margins of error for subgroups are larger.

Source: PPIC Statewide Surveys, January 2000–September 2013.

Contact: surveys@ppic.org

