



PPIC

PUBLIC POLICY
INSTITUTE OF CALIFORNIA

California's Historic Corrections Reforms

Technical Appendix

CONTENTS

Appendix A. Additional Analysis

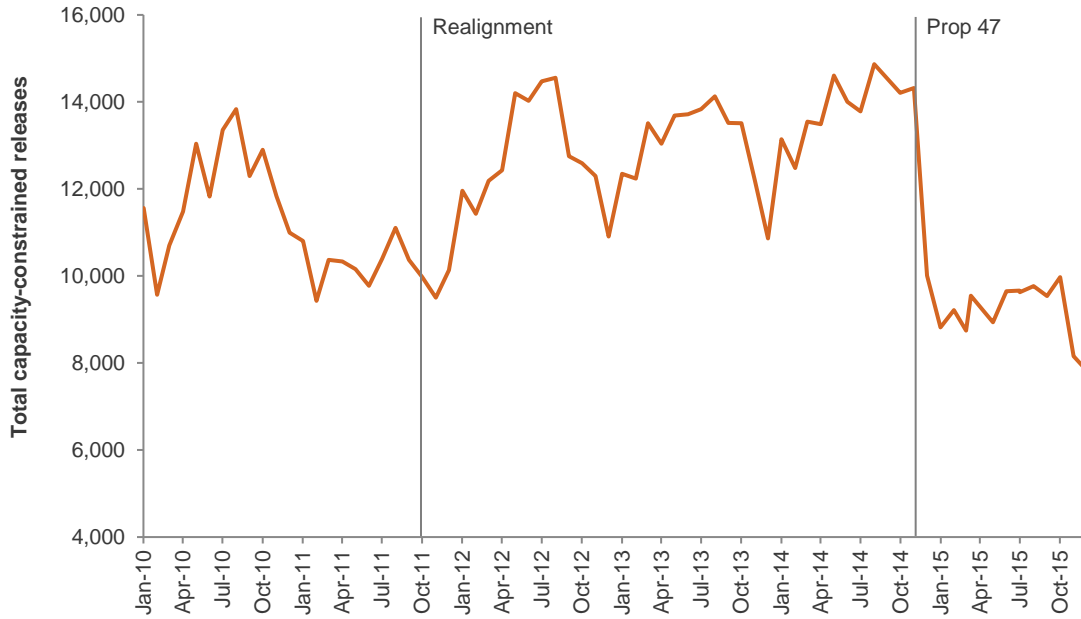
Figure A1	2
Figure A2	3
Table A1	4
Figure A3	5
Figure A4	6
Figure A5	7
Table A2	8
Table A3	9
Table A4	11

Magnus Lofstrom, Mia Bird, and Brandon Martin

Appendix A. Additional Analysis

FIGURE A1

Early jail releases closely follow the overall population trend after realignment and Proposition 47

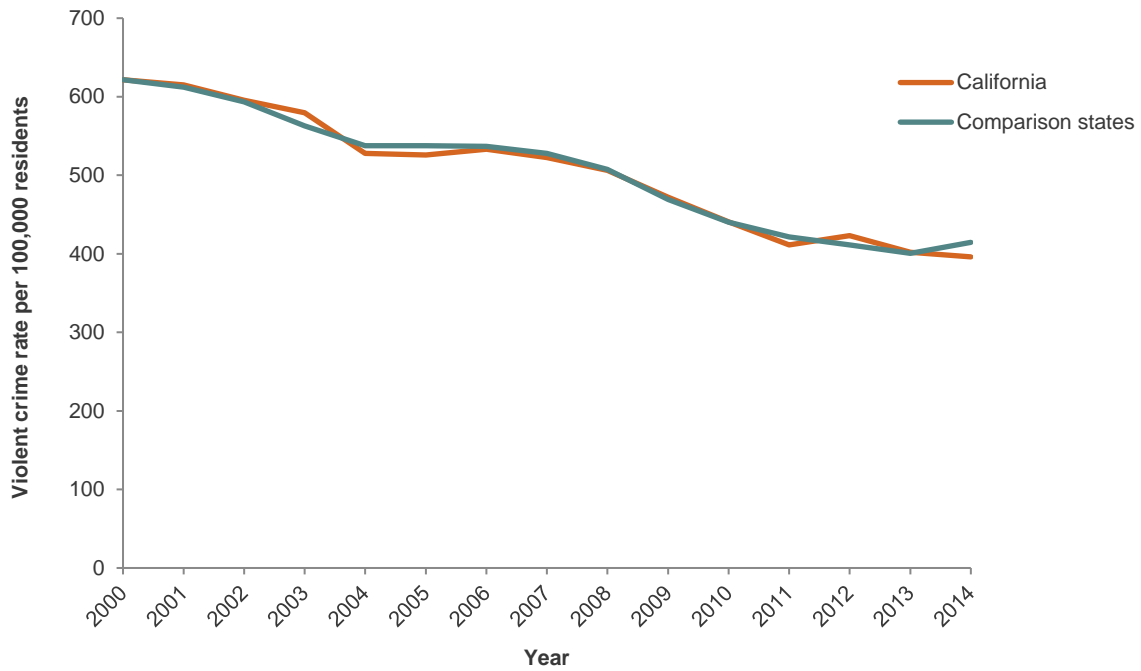


SOURCE: Board of State and Community Corrections, Jail Profile Survey, January 2010–December 2015.

NOTE: Early releases include both convicted offenders released before having served their full sentences and inmates awaiting trial or sentencing. They are released because of jail capacity constraints.

FIGURE A2

California's violent crime differs very little from that of comparison states



SOURCE: Authors' estimates based on annual state-level data from the FBI's Uniform Crime Reports, 2000–2014.

NOTE: The matched comparison states (with estimated weights in parentheses) are Florida (0.338), Maryland (0.161), Montana (0.068), New York (0.214), Rhode Island (0.191), and South Carolina (0.029).

TABLE A1

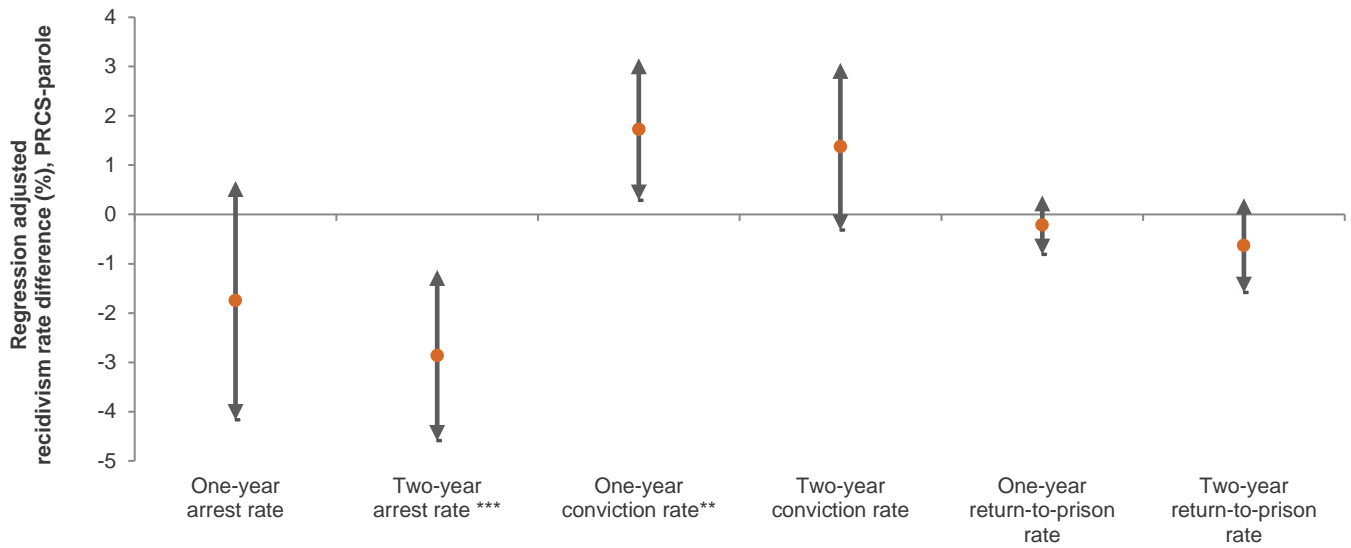
Characteristics of the state prisoners released, comparing PRCS and parole populations

	All	PRCS	Parole	Difference
Age at release	35.9	36.7	34.6	2.1
Male	91.1%	89.0%	94.1%	-5.1%
White	28.6%	30.9%	25.3%	5.6%
Hispanic	40.5%	39.7%	41.8%	-2.2%
Black	25.2%	24.1%	26.9%	-2.8%
Other race/ethnicity	5.6%	5.4%	6.0%	-0.6%
Enhanced outpatient program	2.3%	1.8%	2.9%	-1.1%
Correctional clinical case mgmt system	20.6%	19.9%	21.7%	-1.7%
Department of mental health	0.3%	0.2%	0.6%	-0.4%
Mental health crisis bed	2.4%	1.8%	3.3%	-1.4%
New admission	52.7%	53.4%	51.7%	1.8%
Parole violation with new term	23.7%	31.5%	12.0%	19.5%
Parole violation (revoked)	22.4%	14.9%	33.5%	-18.6%
Pending revocation	1.2%	0.1%	2.9%	-2.7%
Violent offense category	32.8%	14.7%	59.6%	-44.9%
Property offense category	30.9%	37.5%	21.2%	16.3%
Drug offense category	23.8%	34.2%	8.2%	26.0%
Other offense category	12.5%	13.6%	11.0%	2.6%
Sex offender	9.5%	3.3%	18.8%	-15.5%
CDCR serious indicator	15.3%	0.1%	38.0%	-37.9%
CDCR violent indicator	13.7%	0.0%	34.2%	-34.2%
Prior serious crime	19.0%	21.4%	15.3%	6.1%
Prior violent crime	6.3%	6.6%	6.0%	0.6%
Determinate sentence	84.3%	85.1%	83.2%	1.9%
Second striker	15.1%	14.9%	15.4%	-0.5%
Life sentence	0.6%	0.0%	1.4%	-1.4%
Days in custody	636	443	925	-482.4
Re-release	23.6%	15.0%	36.3%	-21.3%
Number of released offenders	61,130	36,586	24,544	

SOURCE: Authors' calculations based on CDCR individual-level administrative data.

FIGURE A3

Adjusted recidivism rates show mostly no difference between offenders released to PRCS or parole



SOURCE: Authors' calculations based on CDCR individual-level administrative data.

NOTE: Offenders released from state prison between October 1, 2011, and September 30, 2012. "PRCS" are those offenders released from prison supervised by county probation on Post-Release Community Supervision. "Parole" includes only those supervised by state parole.

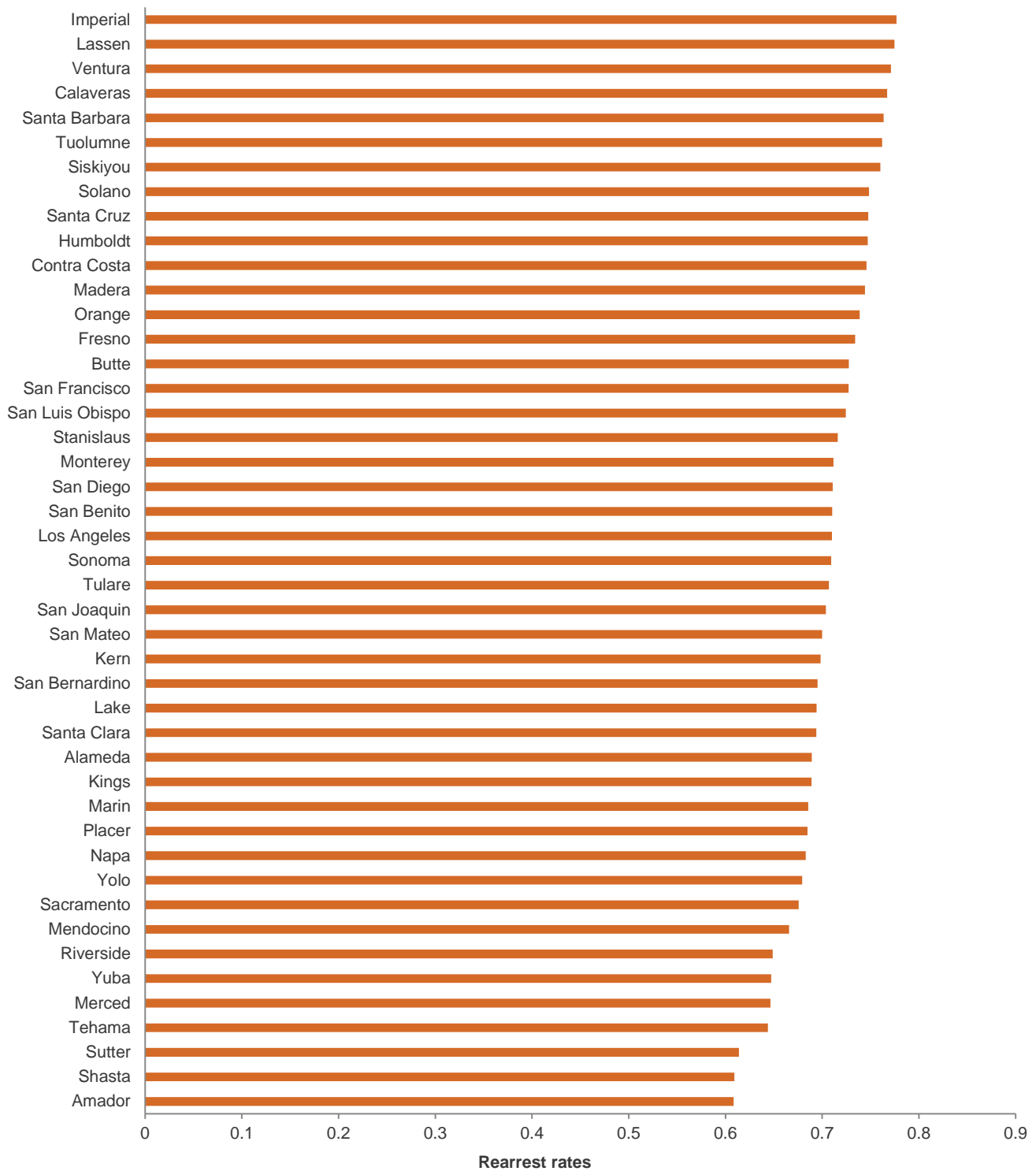
*** Coefficient statistically significant at the 1 percent level of confidence.

** Coefficient statistically significant at the 5 percent level of confidence.

* Coefficient statistically significant at the 10 percent level of confidence.

FIGURE A4

Two-year PRCS rearrest rates by county, adjusted for differences in population compositions

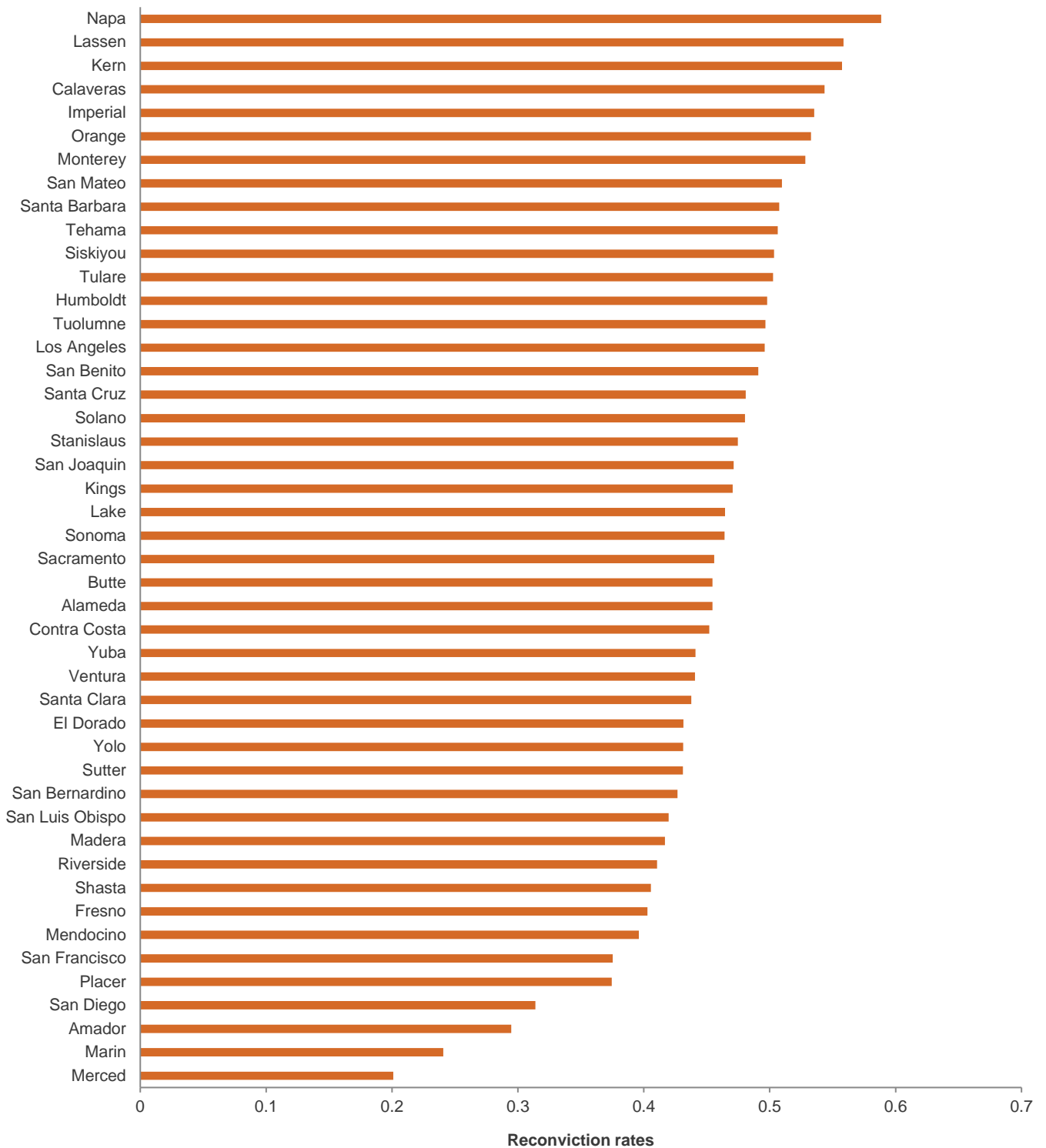


SOURCE: Authors' calculations based on CDCR individual-level administrative data.

NOTE: Recidivism rates for counties with PRCS populations of 20 or more are shown. This cohort includes PRCS offenders released between October 1, 2011, and September 30, 2012.

FIGURE A5

Two-year PRCS reconviction rates by county, adjusted for differences in population compositions



SOURCE: Authors' calculations based on CDCR individual-level administrative data.

NOTE: Recidivism rates for counties with PRCS populations of 20 or more are shown. This cohort includes PRCS offenders released between October 1, 2011, and September 30, 2012.

TABLE A2

Characteristics of PRCS offenders by county group

	High-enforcement counties	High-reentry counties
Age at release	36.8	36.9
Male	89.1%	88.5%
White	26.9%	36.4%
Hispanic	42.1%	36.5%
Black	25.9%	20.8%
Other race/ethnicity	5.1%	6.3%
Mental health treatment	23.3%	24.9%
New admission	54.3%	53.8%
Parole violation, new term	33.1%	29.9%
Parole violation, revoked	12.5%	16.3%
Pending revocation	0.1%	0.0%
Person offense category	13.4%	17.3%
Property offense category	37.8%	37.3%
Drug offense category	35.5%	32.0%
Other offense category	13.3%	13.4%
Sex offender	3.2%	3.7%
Prior serious crime	22.0%	21.0%
Prior violent crime	7.3%	5.7%
Number of prior serious crimes	0.32	0.21
Number of prior violent crimes	0.09	0.06
High risk for recidivism (person)	22.4%	25.3%
High risk for recidivism (property)	20.7%	19.5%
High risk for recidivism (drug)	12.9%	11.8%
Moderate risk for recidivism	27.5%	27.0%
Low risk for recidivism	16.5%	16.4%
Number of released offenders	21,739	9,898

SOURCE: Authors' calculations based on CDCR individual-level administrative data.

NOTE: Mean characteristics are presented for offenders released to the 24 counties categorized as high-reentry counties and offenders released to the 19 counties categorized as high-enforcement counties, based on realignment budget allocations as captured by first-year realignment plans. This cohort includes PRCS offenders released between October 1, 2011, and September 30, 2012.

TABLE A3

Effect of county approach on all (felony and misdemeanor) recidivism outcomes

	All rearrests, one year	All rearrests, two year	All reconviction, one year	All reconviction, two year
Intercept	0.468*** (0.085)	0.554*** (0.066)	0.298** (0.124)	0.305** (0.113)
Reentry-focused county	0.001 (0.013)	-0.003 (0.010)	-0.065*** (0.023)	-0.073** (0.030)
Age	-0.002*** (0.000)	-0.002*** (0.000)	-0.003*** (0.000)	-0.003*** (0.000)
Male	0.031*** (0.011)	0.020 (0.013)	0.043*** (0.005)	0.053*** (0.012)
White	0.052*** (0.017)	0.049*** (0.018)	0.038*** (0.011)	0.040*** (0.013)
Black	0.014 (0.020)	0.024 (0.023)	0.001 (0.010)	0.003 (0.014)
Hispanic	-0.002 (0.014)	-0.011 (0.015)	0.009 (0.012)	-0.006 (0.014)
Mental health	0.055*** (0.005)	0.052*** (0.009)	0.030*** (0.006)	0.043*** (0.009)
Person offense	0.040*** (0.013)	0.034*** (0.011)	0.014 (0.012)	0.035*** (0.011)
Property offense	0.049*** (0.006)	0.035*** (0.007)	0.057*** (0.007)	0.065*** (0.011)
Drug offense	0.036*** (0.005)	0.020*** (0.007)	0.042*** (0.010)	0.041** (0.016)
New admission	-0.134 (0.085)	-0.107 (0.070)	-0.219* (0.115)	-0.116 (0.113)
Parole violator, new case	0.017 (0.088)	0.030 (0.076)	-0.118 (0.122)	0.024 (0.119)
Parole violator, revocation	0.044 (0.082)	0.041 (0.071)	-0.124 (0.117)	0.007 (0.113)
Sex offense	-0.005 (0.019)	-0.025* (0.014)	0.000 (0.014)	-0.031* (0.015)
Any prior serious	0.001 (0.010)	0.007 (0.006)	-0.039*** (0.009)	-0.017* (0.010)
Any prior violent	-0.011 (0.009)	-0.009 (0.006)	-0.067*** (0.008)	-0.044*** (0.011)
Number of prior serious	-0.003 (0.006)	0.000 (0.005)	0.000 (0.004)	0.000 (0.003)
Number of prior violent	-0.005 (0.006)	0.005 (0.005)	0.012** (0.005)	0.012* (0.007)
High risk, person	0.290*** (0.007)	0.297*** (0.011)	0.178*** (0.010)	0.262*** (0.014)
High risk, property	0.256*** (0.007)	0.271*** (0.011)	0.148*** (0.012)	0.239*** (0.015)

	All rearrests, one year	All rearrests, two year	All reconviction, one year	All reconviction, two year
High risk, drug	0.270*** (0.009)	0.291*** (0.007)	0.153*** (0.018)	0.240*** (0.016)
Moderate risk	0.134*** (0.004)	0.156*** (0.008)	0.059*** (0.007)	0.111*** (0.010)

SOURCE: Authors' analysis based on CDCR individual-level administrative data.

NOTE: Recidivism analysis is based on outcomes for offenders released to the 24 counties categorized as high-reentry relative to outcomes for offenders released to the 19 counties categorized as high-enforcement counties, based on realignment budget allocations as captured by first-year realignment plans. This cohort includes PRCS offenders released between October 1, 2011, and September 30, 2012.

*** Coefficient statistically significant at the 1 percent level of confidence.

** Coefficient statistically significant at the 5 percent level of confidence.

* Coefficient statistically significant at the 10 percent level of confidence.

TABLE A4

Effect of county approach on felony recidivism outcomes

	All rearrests, one year	All rearrests, two year	All reconviction, one year	All reconviction, two year
Intercept	0.342*** (0.102)	0.409*** (0.091)	0.128 (0.084)	0.110 (0.095)
Reentry-focused county	-0.029* (0.016)	-0.034** (0.015)	-0.059** (0.023)	-0.063** (0.026)
Age	-0.004*** (0.000)	-0.003*** (0.000)	-0.002*** (0.000)	-0.003*** (0.001)
Male	0.045*** (0.014)	0.039** (0.015)	0.037*** (0.005)	0.048*** (0.012)
White	0.033*** (0.014)	0.025 (0.015)	0.040*** (0.011)	0.045*** (0.012)
Black	-0.004 (0.016)	-0.005 (0.016)	0.012 (0.009)	0.017 (0.012)
Hispanic	-0.011 (0.014)	-0.027* (0.015)	0.013 (0.010)	0.006 (0.014)
Mental health	0.039*** (0.007)	0.033*** (0.007)	0.015** (0.006)	0.018** (0.007)
Person offense	0.019 (0.012)	0.016* (0.009)	0.007 (0.006)	0.015 (0.009)
Property offense	0.074*** (0.007)	0.073*** (0.008)	0.060*** (0.008)	0.072*** (0.009)
Drug offense	0.056*** (0.008)	0.051*** (0.011)	0.044*** (0.006)	0.048*** (0.010)
New admission	-0.094 (0.105)	-0.098 (0.099)	-0.084 (0.065)	0.004 (0.081)
Parole violator, new case	0.069 (0.108)	0.062 (0.104)	0.020 (0.075)	0.153* (0.088)
Parole violator, revocation	0.079 (0.100)	0.052 (0.098)	-0.018 (0.066)	0.098 (0.080)
Sex offense	-0.007 (0.014)	-0.014 (0.013)	0.004 (0.011)	-0.012 (0.013)
Any prior serious	-0.010 (0.010)	-0.006 (0.010)	-0.042*** (0.010)	-0.028** (0.011)
Any prior violent	-0.020 (0.013)	-0.015 (0.009)	-0.055*** (0.008)	-0.034*** (0.009)
Number of prior serious	-0.002 (0.004)	0.000 (0.004)	0.001 (0.004)	0.001 (0.003)
Number of prior violent	0.002 (0.005)	0.006 (0.005)	0.004 (0.003)	0.001 (0.005)
High risk, person	0.275*** (0.008)	0.291*** (0.013)	0.145*** (0.013)	0.204*** (0.014)
High risk, property	0.244*** (0.009)	0.267*** (0.016)	0.134*** (0.012)	0.210*** (0.015)
High risk, drug	0.256*** (0.012)	0.276*** (0.011)	0.135*** (0.020)	0.197*** (0.021)

	All rearrests, one year	All rearrests, two year	All reconviction, one year	All reconviction, two year
Moderate risk	0.107***	0.133***	0.044***	0.079***
	(0.006)	(0.009)	(0.008)	(0.010)

SOURCE: Authors' analysis based on CDCR individual-level administrative data.

NOTE: Recidivism analysis is based on outcomes for offenders released to the 24 counties categorized as high-reentry relative to outcomes for offenders released to the 19 counties categorized as high-enforcement counties, based on realignment budget allocations as captured by first-year realignment plans. This cohort includes PRCS offenders released between October 1, 2011, and September 30, 2012.

*** Coefficient statistically significant at the 1 percent level of confidence.

** Coefficient statistically significant at the 5 percent level of confidence.

* Coefficient statistically significant at the 10 percent level of confidence.



PPIC

PUBLIC POLICY
INSTITUTE OF CALIFORNIA

The Public Policy Institute of California is dedicated to informing and improving public policy in California through independent, objective, nonpartisan research.

Public Policy Institute of California
500 Washington Street, Suite 600
San Francisco, CA 94111
T: 415.291.4400
F: 415.291.4401
PPIC.ORG

PPIC Sacramento Center
Senator Office Building
1121 L Street, Suite 801
Sacramento, CA 95814
T: 916.440.1120
F: 916.440.1121